

# **The Town of Bow**

## ***“Then and Now”***

### ***A work in Progress***

***By Eric Anderson and Jim Dimick***

***May 2023***

***Bow Heritage Commission***



The Bow Bog Meeting House as seen in the 1920s with a Carriage Shed—Photographer—Unknown



*Photo by © Eric Anderson 2016-8683*

The Bog Bog Meeting House on Bog Bog Road—built in 1835





**Bow Bog Meeting House 1835—Bow Bog Road, Bow, NH—Late 1800s**



*Photo by © Eric Anderson 2023 #2746*

**Bow Bog Meeting House 1835—Bow Bog Road, Bow, NH as seen in 2023**





**Bow Town Hall 1847—1956, Bow Center Road, Bow, NH—1925**



*Photo by © Eric Anderson 2023*

**Old Town Hall—Built 1847 and Renovated Early-1990s—Bow, NH**





The Bow Grange Hall was built in the 1920s on South Street at the current site of the Bow Mobil Station. In addition to Grange events, meetings, shows, school graduations, and other entertainment gatherings were also held in the hall.



*Photo by © Eric Anderson 2023-2726*

The Bow Mobil Station at 519 South Street. The Mobil Station was built and become operational 1994. (Original photo of the Bow Grange above appears of page 12 “Bow—Images of America”)





Baker Free Library. The Baker Free Library was built in 1914, using land and funds donated by Congressman Henry Baker in 1912. Baker also donated his personal library of books which are part of the collection today. This photograph was taken in 1919, that shows a portion of the the Baker homestead in the background. (*"Bow—Images of America" on page 16*)



The Baker Free Library on South Street in the Spring with the NH Automobile Association building in the background. (*Photo by Eric Anderson 19-Apr-2012 #1051b*)





Looking west, the Baker Free Library as seen from the back of the Library across a field of corn in the 1920s



Baker Free Library looking west at the main entrance across the parking lot





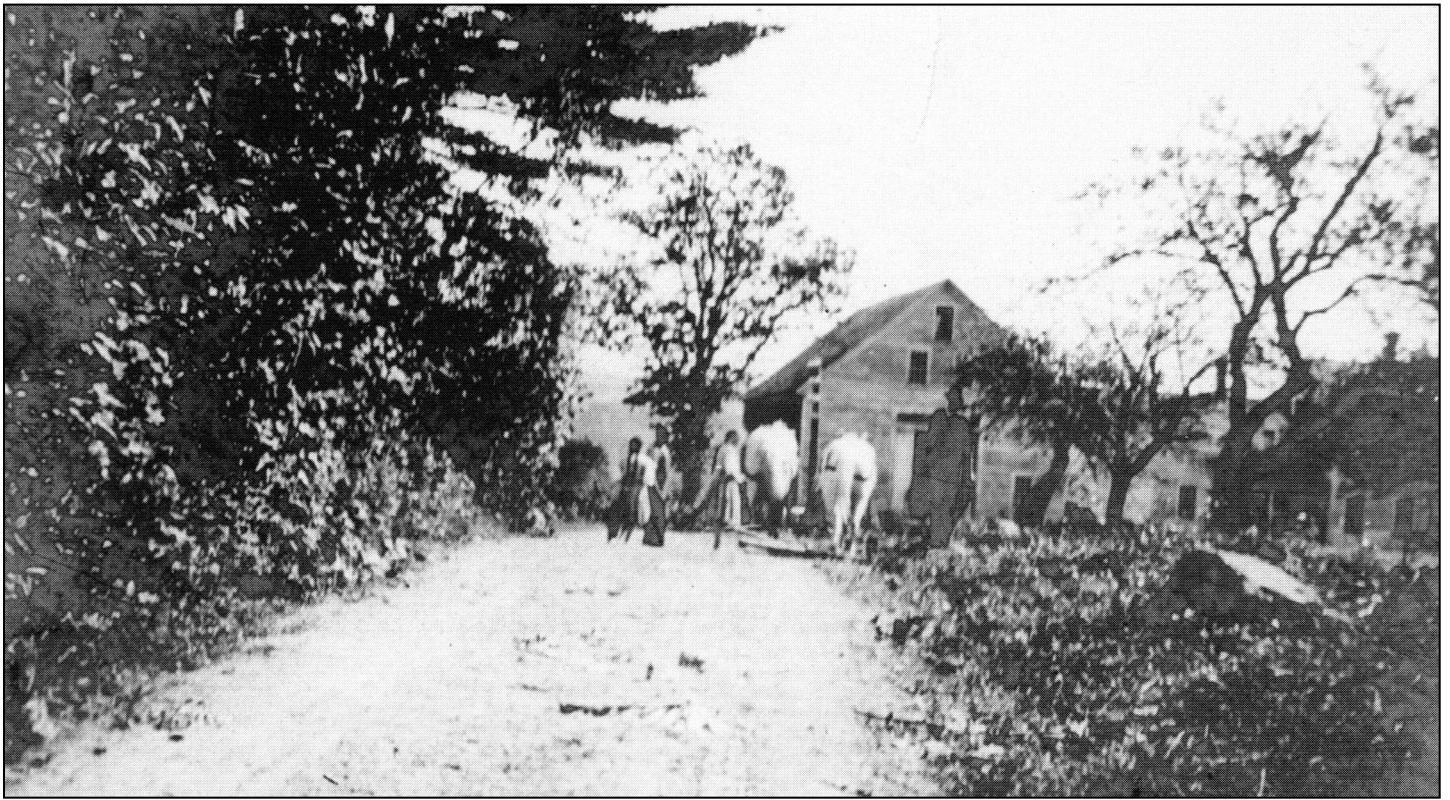
Another of the mills at Bow Mills was the Gristmill, located at the lower dam, which formed the “upper pond” seen here. The ponds by the dams were popular swimming sites. Above this was the “upper Dam” with a small sawmill. There were several dams in the area, the upper and lower dams to the west of South Street, and the middle dam was just to the east of South Street.



*Photo by © Eric Anderson 2013*

The Chen Yang Li Restaurant at 520 South Street. A portion of the original Gristmill foundation can be seen on the lower level. (Original photo of the Gristmill and narrative above appears of page 36 “Bow—Images of America”)





Dow Road at its intersection with the Londonderry Turnpike (Now Route 3A). The barn and farmhouse were owned by Edwin Alexander and conveyed to Burt Alexander and his wife Eva May (Noyes Alexander). The team of horses was owned by the family and used on the farm. The original barn is gone now, but the house remains.



*Photo by © Eric Anderson 2023*

Dow Road at its Intersection with Route 3A (formerly the Londonderry Turnpike). The original barn named the “River View Farm” was removed in the late 1980s. It is currently the home of Art Cheney on Route 3A.





The White Farm—Jersey Herd. The White Farm was located on The Londonderry Turnpike, now NH Route 3A. The White Farm was one of the best-known farms in Merrimack County. It contained 150 acres down to the Merrimack River and extending to Garvin Falls. (Photo published in the *Granite Monthly* August 1900 pg 168.)

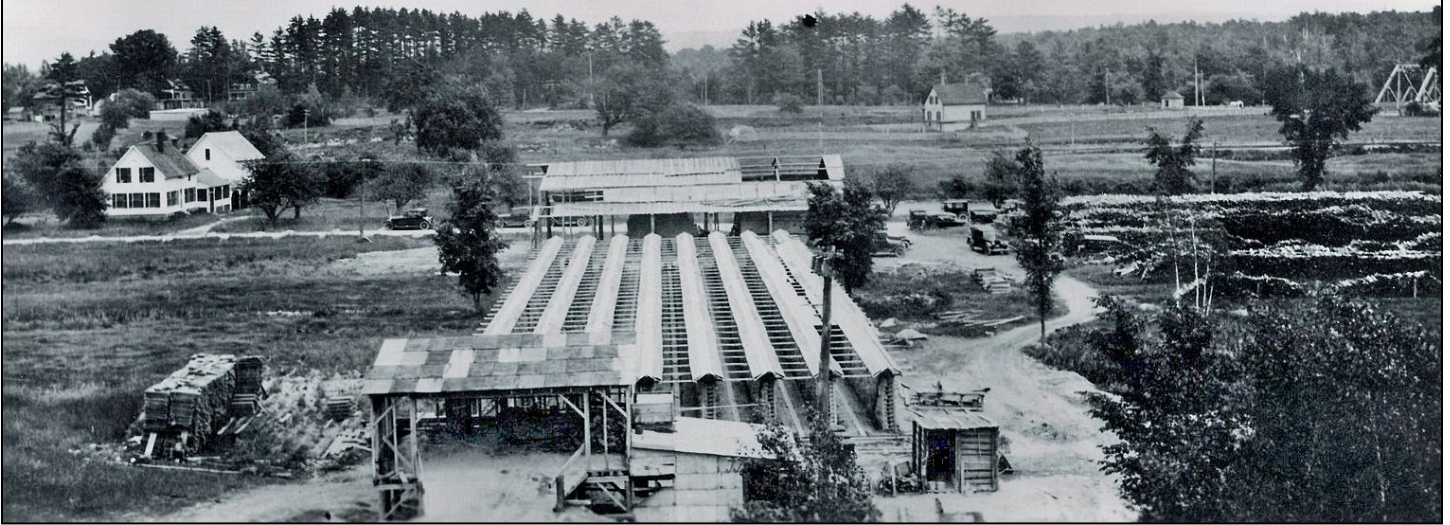


Photo by © Eric Anderson 2006

The White Farm has passed through the hands of several owners. It continued as a dairy farm into the 1950s. The barn was damaged in the Hurricane of 1938, and it was removed in the mid-1950s. In recent years it was a gathering place for homeless. The land was sub-divided, and the remaining structure was demolished in 2022.



**The Bow Brick Yard in the late-1800s to early-1900s looking across Route 3A (formerly the Londonderry Turnpike and the Merrimack River (note railroad bridge at right)**



**Grappone automotive parking lot looking across Route 3A toward Blue Seal and Pitco located along the Merrimack River—2023 Photo**



*Photo by © Eric Anderson 2023*





**The Noyes Ferry Crossing of the Merrimack River was originally located near the former intersection of River Road with Johnson Road in the late-1800s**



*Photo by © Eric Anderson 2023*

**Looking across the Merrimack River from the approximate location of the original Noyes Ferry Crossing—2023 Photo**





Hall Street at the Intersection of Route 3A (formerly, the Londonderry Turnpike)—This railroad bridge replaced the original covered railroad bridge that was destroyed in the floods of the 1920s. (1924 photo)



Hall Street at the Intersection of Route 3A—The original bridge abutments can almost be seen in the background. The original metal bridge (in the top photo) was dismantled and sold for scrap in the 1950s when the railroad discontinued its service in the area.





On Grandview Road looking up toward South Street with Valley Road going off at the right and Logging Hill Road going off to the left



Photo by © Eric Anderson 2023

On Grandview Road looking up toward South Street going under the I-89 bridge with Valley Road going off at the right and Logging Hill Road going off to the left. Photo taken in front of the Harvey Moody Home





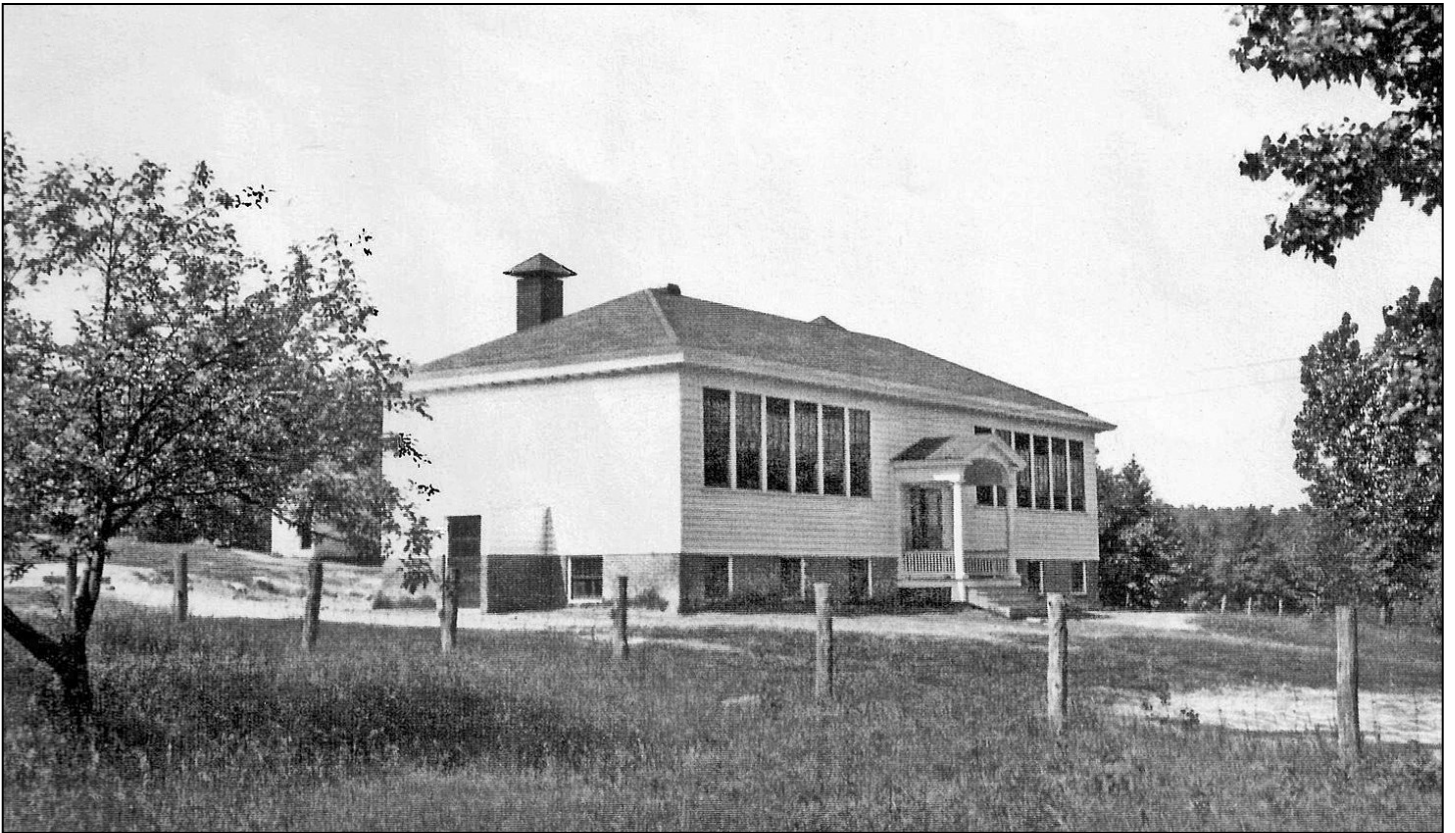
**John Grappone Industrial Equipment Company**, one of Bow's first commercial businesses in the 1950s–1960s, was located in Bow Junction on Route 3a approximately where John Grappone Ford is currently located. The photo above is published in “Bow—Images of America” on page 56.



*Photo by © Eric Anderson 15-Dec-2023 #4021*

**John Grappone Ford** is located between the Irving Fuel Station and Pitco at 514 Route 3A in the Bow Junction area. It was built in 1973.





**Bow Mills School**—This school on Grandview Road was opened in 1927 to replace the brick schoolhouse at the bottom of Logging Hill Road. To accommodate a growing school population, the school was enlarged in 1948-1949 with two wings of class rooms at each end of the original building. Until 1963, grades 1-8 were held here. The school was closed in 1970 when a wing was added to the Bow Memorial School to meet the growing school population at that time for grades 1-8. (The photo above is published in “Bow—Images of America” on page 56.)



*Photo by © Eric Anderson 2023*

**The Town of Bow Municipal Office Building**—Following the relocation of the student population from the Bow Mills School to the Bow Memorial School (Grades 1-8) in 1970, the Town acquired the building as a Municipal Office Building to house the management functions of the evolving Town’s administration.





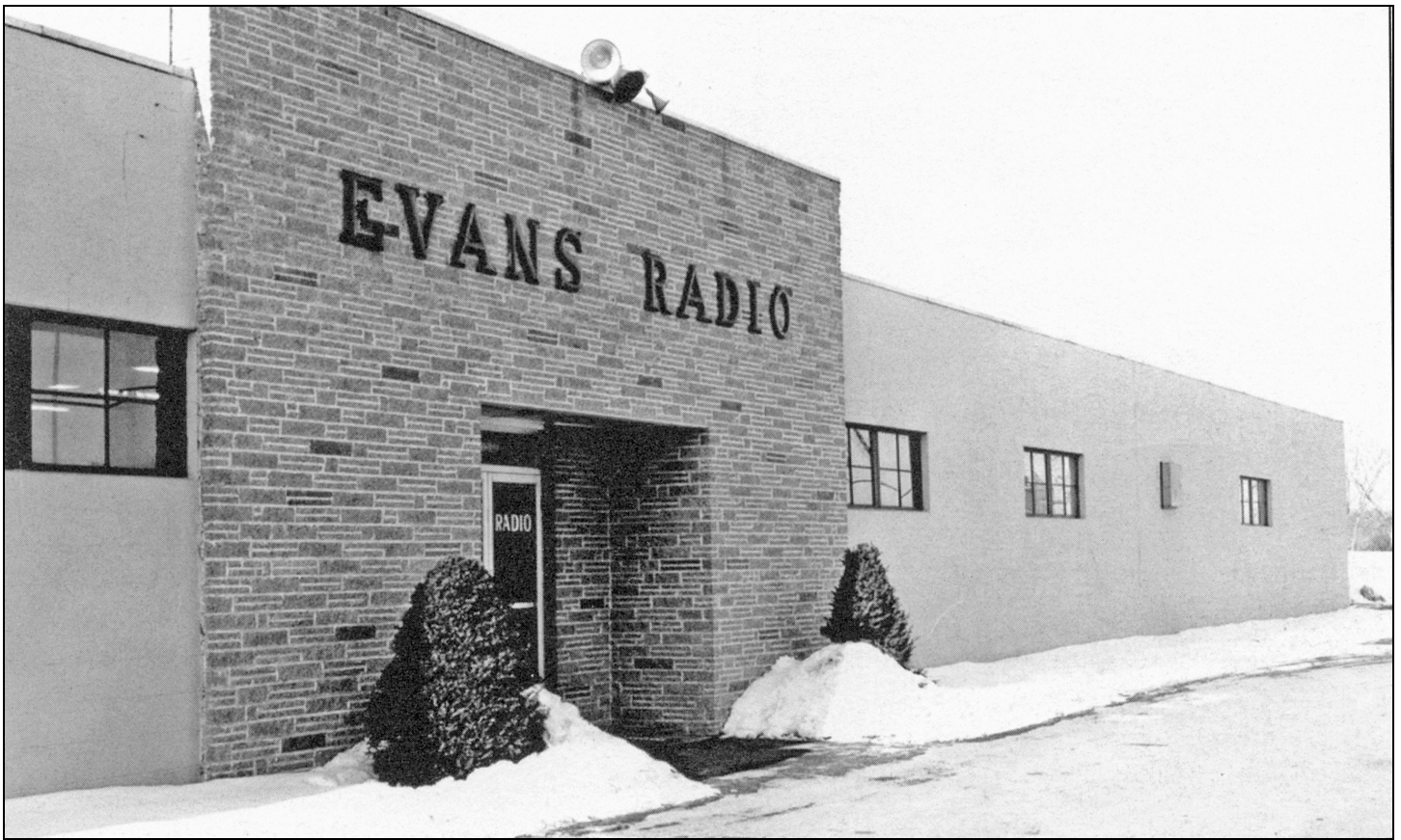
Grace and Tom Cote's Stand on the west side of Route 3A across the road from Bill and Rollin's Gas Station.



Photo by © Eric Anderson 2023

A portion of the Pitco production facility on the west side of Route 3A





Evans Radio—This complex was built in the early-1970s on Route 3A by Carl Evans. It was located on the present site of the Toyota Dealership. The photo above is published in “Bow—Images of America” on page 69.



Photo by © Eric Anderson 2012-3842

Grappone Toyota Dealership—The Toyota Dealership built their facility at 594 Route 3A on the site of Evans Radio. Their facility was added onto and incorporated into the original Evans Radio building itself.





Suburban Lumber Company. The lumber and building supply company was located on the west side of Route 3A on the current site of the Irving Gas Station. Suburban was one of the new industries in Bow, opening in the 1960s. The property was transferred to Irving Oil Company in 1994. The photo above is published in “Bow—Images of America” on page 69.



Photo by © Eric Anderson 2023 6875

The Irving Gas Station is currently located on the site formerly occupied by the Suburban Lumber Company since 1994. It is located on the west side of Route 3A just south of the Bow-Concord town line.





**The Colby Blacksmith Shop.** Willaby Colby operated the blacksmith shop on the west side, at the foot, of Logging Hill Road. In the Bow Mills area The shop opened in 1860 and was in operation into the 1920s. In the background is the Frank Colby family home. The I-89 bridge and interchange impacted this area in the 1960s.



*Photo by © Eric Anderson 2023 3026*

At the intersection of South Street, Valley Road, Grandview Road, and Logging Hill Road as viewed from the west side of South Street. (Original photo above appears of page 72 “Bow—Images of America”)



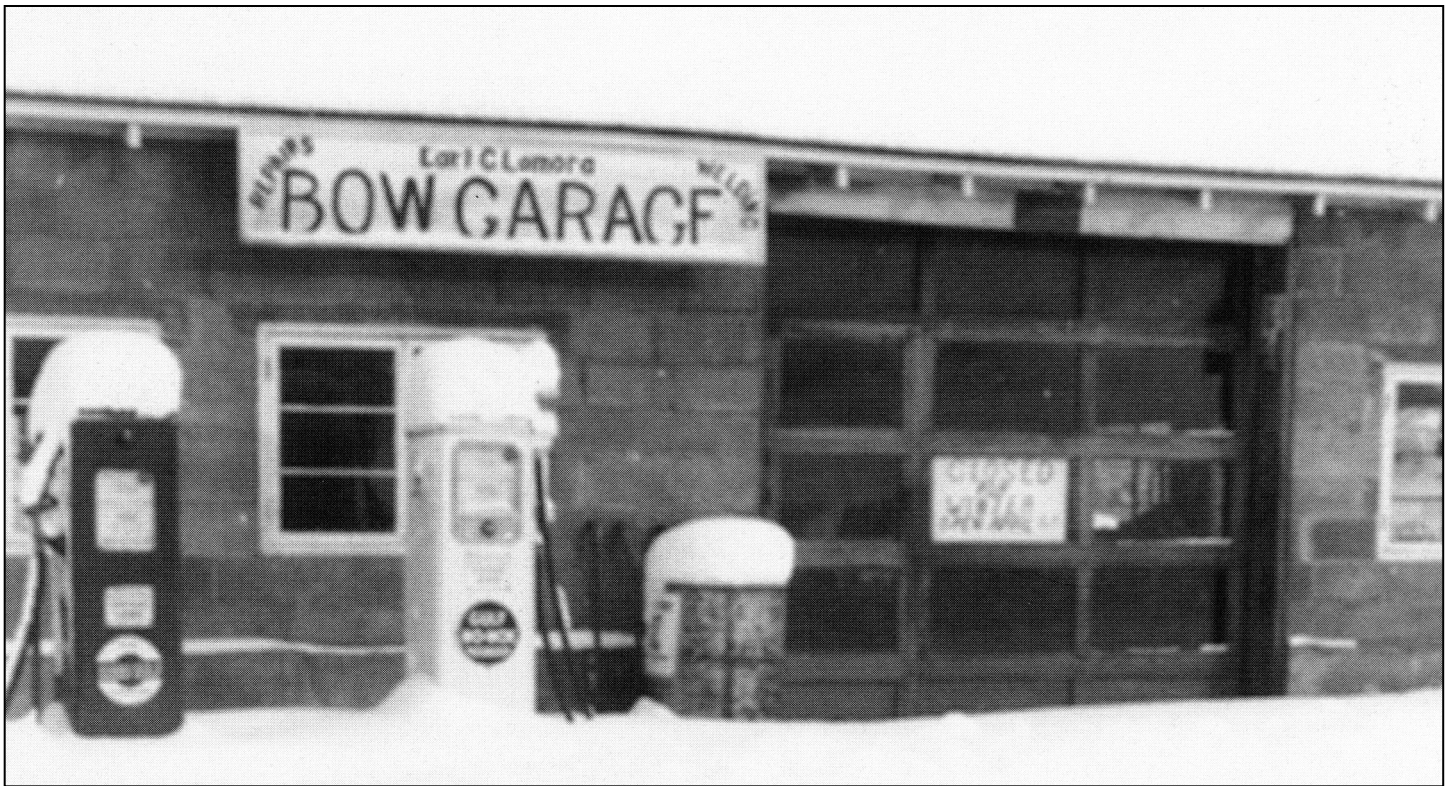


Henry M. Baker Residence. During his lifetime of 71 years, he was a mill operator and became a successful lawyer. Henry Baker in 1912 donated the funds and part of his land for the construction of the Baker Free Library.  
(1892 photo)



The Automobile Dealers Association at 507 South Street. (Original photo above appears of page 74 "Bow—Images of America")





"The Lamora's Garage was popular with Bow residents for over 32 years. This photograph, taken in the winter of 1957, shows that the garage was closed for the season. The ownership has changed hands a few times since Earl Lamora first opened his garage upon his return from WW-II (1957 photo)



Photo by © Eric Anderson 2023

Dick's Service Center is located at the corner of South Street and Valley Road. (Original photo above appears of page 75 "Bow—Images of America")





1868—James, Aaron, and John Baker (3 generations) lived on this farm. It was located on the west side of the hill on Baker Road. The shed-like building on the right of the photo was part of the original saltbox home-  
stead. John Baker moved what was left from the top of the hill to his house and used it as a storage barn. The  
white “X” on the building marks the room in which Mary Baker Eddy was born July 16, 1821. She died in New-  
ton, Massachusetts in 1910 at age 89. All these buildings burned in 1910.



*Photo by © Eric Anderson 2023*

**The Birthplace of Mary Baker Eddy in 1821—Baker Road, Bow, NH**





Construction of the Public Service Complex on River Road began in 1958. (Depicted are Selectmen Arthur Chadwick, Richard Hanson, and Wilber Vaughn; also, Fire Chief Harold Howe, and officials from the public service company. The photo above is published in “Bow—Images of America” on page 87.



Photo by © Eric Anderson 2023 6881

The southern entry to the Bow Power Plant just off of on River Road, Bow, NH.

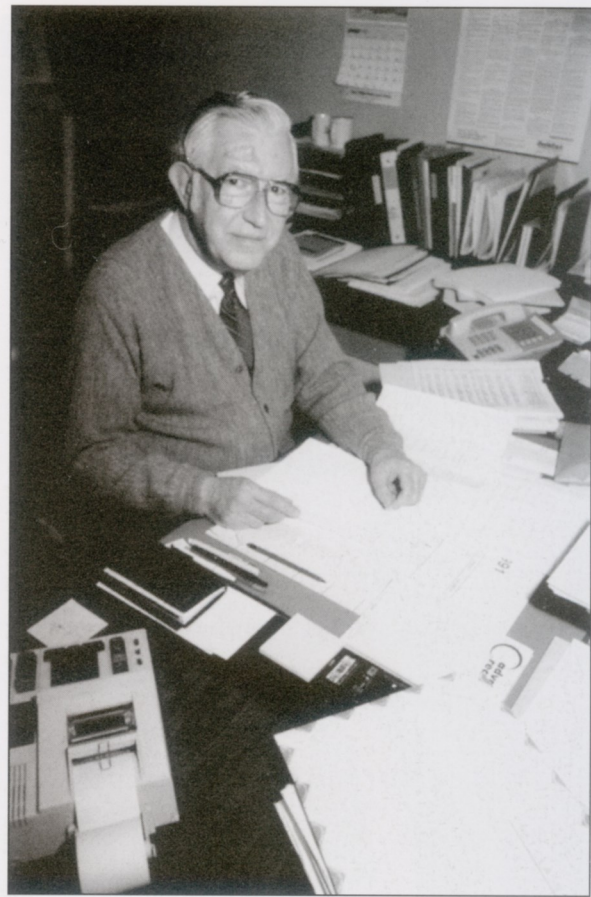


**NEW TO TOWN.** Growing pains dictated that the size and make-up of the town's governing body be changed. After study and acceptance of the new idea, Bow changed to a town manager style. Al St. Cyr was hired as the first town manager in October 1989. Not an ordinary man, but one who diligently pursued better government for Bow; his imaginative ideas provided guidance for more than a decade.

*Albert St. Cyr became the Town's first Town Manager in October 1989. He served in that position until his passing in 2001. He served the Town as its first Town Manager for a span of 12 years.*

*Following Albert St. Cyr's passing in 2001, Jim Pitts served as the Town's second Town Manager from 2002 to 2010, a span of eight years.*

*\* The Al St. Cyr photo and text appears on page 93, "Bow—Images of America."*



David Stack is serving as the Town's third Town Manager. He began his current appointment as the Town Manager in 2010. (Photo by Eric Anderson 1-Jan-2023 #5029)





*Photo by © Eric Anderson—1995*

The Town of Bow's Highway Department, until the mid-1990s, was located just beyond the outside basketball courts at the entrance to the Bow High School off of White Rock Hill Road. The original Transfer Station was located at the right and behind the Highway Department until curbside pickup was adopted with Article 34 at the 1996 Annual Town Meeting.



*Photo by © Eric Anderson 2023*

Entrance to the Bow High School on Falcon Drive just off of White Rock Hill Road. The town's earlier landfill is capped at the right and behind Falcon Way. (Original photo above appears of page 97 "Bow—Images of America")





The Bow Volunteer Fire Department Location in 1945 was on South Street—Note: Sycamore Tree at Right



*Photo by © Eric Anderson 2023*

The Bow Volunteer Fire Department in 1945 was located where the I-89 overpass is currently located (the arrow denotes the current location of the Sycamore Tree that still stands today)





Sycamore Tree

The Bow Volunteer Fire Department Location in 1945 was on South Street—Note: Sycamore Tree at Right



Sycamore Tree

Original Location of  
the Bow Volunteer  
Fire Department in  
1945

Photo by © Eric Anderson 2023

The Bow Volunteer Fire Department in 1945 was located where the I-89 overpass is currently located (the arrow denotes the current location of the Sycamore Tree that still stands today)





Looking down Valley Road prior to the Interstates' arrival. In 1926 people had to make do with what they had. This photo captures a bit of the Town's history. The home of Alice Hanson is on the right, Upton Shingle Mill is on the left, and the Women's Christian Temperance Union Hall is off in the distance on the left. (1926 photo)



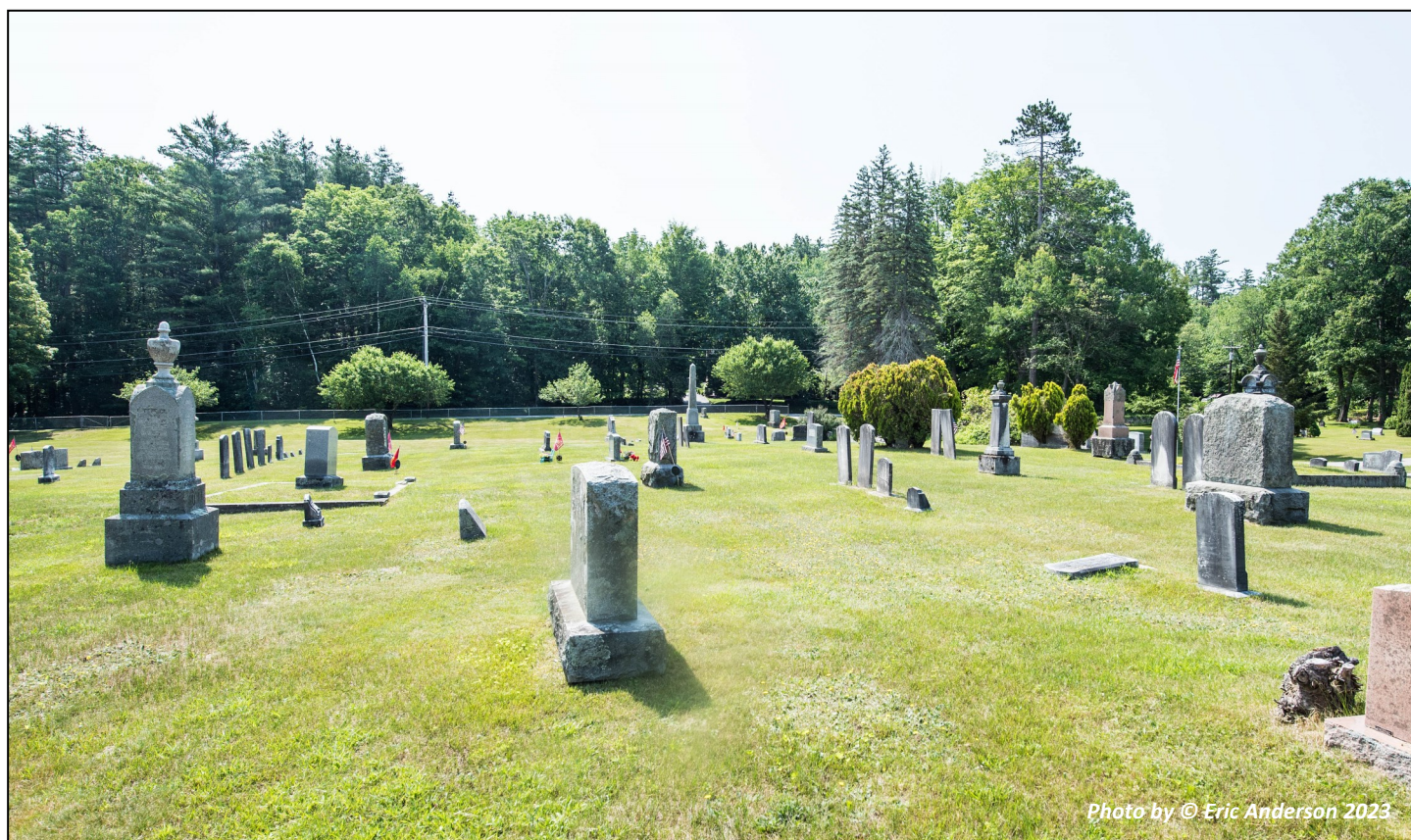
*Photo by © Eric Anderson 2023*

A view east on Valley Road as seen from the intersection of Grandview Road and Logging Hill Road. I-93 passes across at center-right in the clearing. (Original photo above appears of page 116 "Bow—Images of America")





Evans Cemetery. John Foote (left), the town Sexton, works to replace sod and expand the area of the Evans Cemetery. Enos Foote works in the center, and the third man is unidentified. The cemetery has been in use since the mid-1800s.



*Photo by © Eric Anderson 2023*

Evans Cemetery looking west toward White Rock Hill Road just to the left of the main entrance. (Original photo above appears of page 124 "Bow—Images of America")





The Roy Cilley farmhouse in the late 1800s on Route 3A at the Bow-Concord town line. The building on the far right was used to store block of ice cut from Ma Willey's Pond. The photo above is published in "Bow—Images of America" on page 125.



The Honda Dealership's Used Car parking area on the east side of Route 3A at the Bow-Concord town-line





Turtle Pond. In the winter, Ma Willey's Pond was a popular skating spot and it also supplied the Cilley family ice business. In the distance, at the center, houses on the top of Grandview Road can be seen. The photo above is published in "Bow—Images of America" on page 125.



Photo by © Eric Anderson 2012-2013

Looking across Ma Willey's Pond and Route-3A just south of the Honda Dealership on the east side of Route 3A. Pitco manufacturing facilities can be seen at the center-right.



# **The Town of Bow**

## ***“Then and Now”***

### ***A work in Progress (Cont’d)***

***By Eric Anderson and Jim Dimick***

***April 2024***

***Bow Heritage Commission***





The Bow Bog Meeting House as seen in the mid-to-late 1800s—Photographer—Unknown



Photo by © Eric Anderson 2022-#901

The Bow Bog Meeting House on Bow Bog Road—built in 1835





The Old Bow Meeting House in 1801



Photo by © Eric Anderson 2023

The original location of the Old Bow Meeting House was at the top of White Rock Hill Road  
at the intersection of Page Road—2023 Photo





With the installation of the sewer system to the new Bow High School in 1995, the house at the intersection of Logging Hill and White Rock Hill Roads had to be removed as it was situated within the setback. The Bow Rotary Club agreed as a follow-up to take this on as a Town Beautification Project. The boulders removed for the sewer line were identified as NH Diamonds and they were incorporated into the landscape design. The project was completed in 1999, and the Bow Garden Club has created and maintained the "beautification" ever since.



The Bow Rotary Club in concert with the Town of Bow and with the ongoing help from the Bow Garden Club, the Rotary Club funded and constructed Rotary Park as a Community Beautification Project in 1998-99. The Bow Garden Club has continued to maintain the park with the appreciation of the Bow community.





**Logging Operations on South Street Looking Southerly 1800s—Early 1900s**



*Photo by © Eric Anderson 2023*

**Hotel, Restaurant, and Gas Station on South Street Looking Southerly Toward the I-89 Overpass**





3A Bridge "B," "Turkey River." Re-inforced Concrete Floor. Roadway  
20 foot wide. Capacity for Steam Road Roller.



Photo by © Eric Anderson 24-Dec-2023 #4062

The Route 3A Bridge is located near the intersection of Carriage Road with Route 3A where the Turkey River joins the Merrimack River.





**The Old Dry Bridge** on River Road that crosses over the original two railroad tracks. Travel posted for 5 miles per hour crossing over the bridge.



*Photo by © Eric Anderson 2023*

The original bridge was replaced in 1989 with two travel lanes and a 30 mph speed limit on the bridge.





Merrimack Farmers Exchange Facility on Hall Street in the 1940s



Blue Seal Facility on Hall Street—2023





Merrimack Farmers Exchange Facility on Hall Street in the 1940s



Photo by © Eric Anderson 2023-2019

Blue Seal Facility on Hall Street—2023





The original home and farm of Herbert and Milly White Farm demolished in the late-1980s. The barn was dismantled, moved, and reconstructed in Canterbury in the late 1980s.



The Hampton Inn at 515 South Street—Bow, NH (Built in 1990)





With the installation of the sewer system to the new Bow High School in 1995, the house at the intersection of Logging Hill and White Rock Hill Roads had to be removed as it was situated within the setback. The Bow Rotary Club agreed as a follow-up to take this on as a Town Beautification Project. The boulders removed for the sewer line were identified as NH Diamonds and they incorporated into the landscaping design. The project was completed in 1999, and the Bow Garden Club has created and maintained the “beautification” ever since.



The Bow Rotary Club in concert with the Town of Bow and with the ongoing help from the Bow Garden Club, the Rotary Club funded and constructed Rotary Park as a Community Beautification Project in 1998-99. The Bow Garden Club has continued to maintain the park with the appreciation of the Bow community.