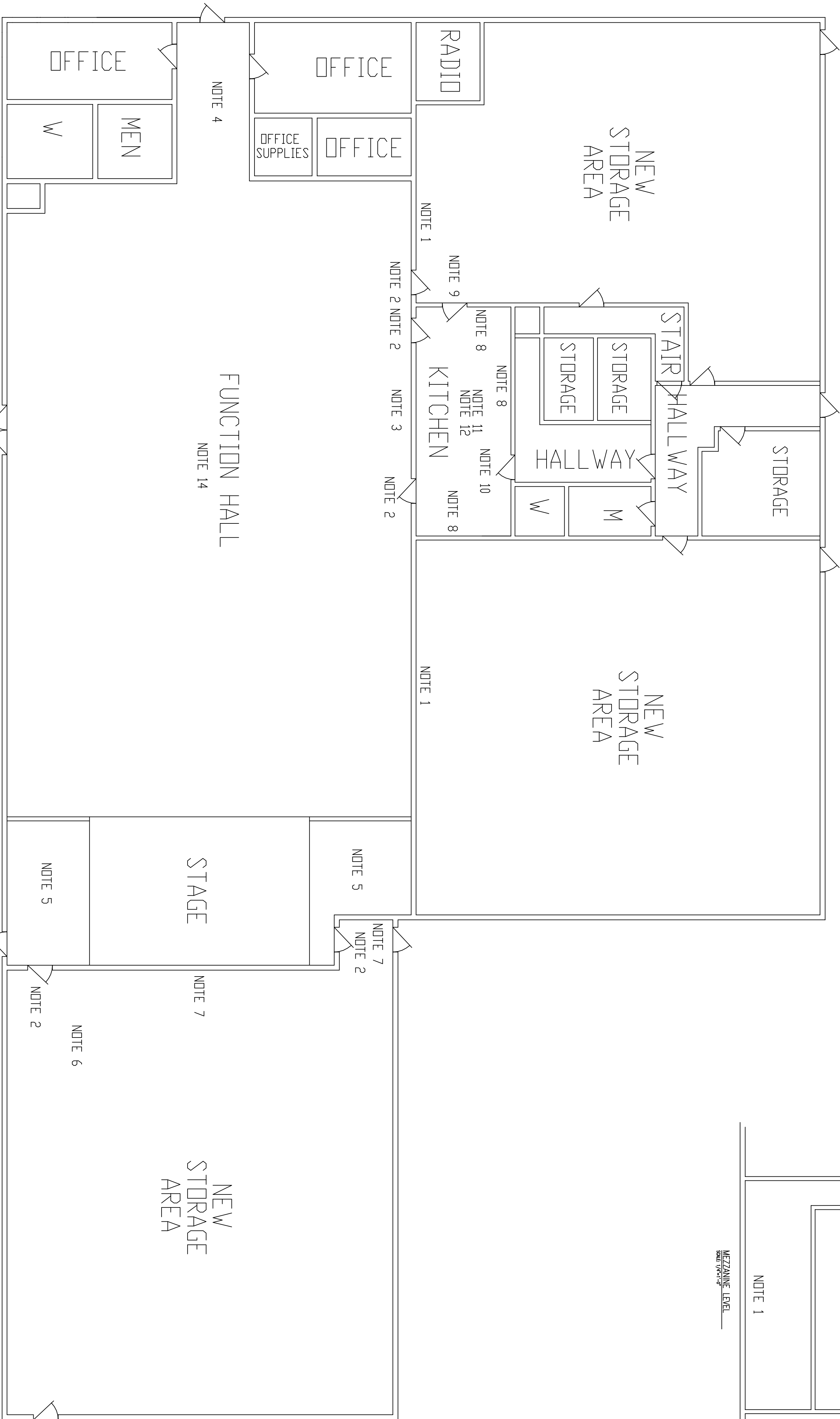


### CODE SUMMARY

THE BUILDING IS NOT PROTECTED WITH SPRINKLERS. EACH OCCUPANT USE IS REQUIRED TO BE SEPARATED USING FIRE RATED CONSTRUCTION: ASSEMBLY TO STORAGE 2HR, OFFICE TO ASSEMBLY/STORAGE 0 HR, KITCHEN 1 HR, THERE ARE NO DIVERNITE SLEEPING FACILITIES IN THE BUILDING.  
KITCHEN HOOD AND EXHAUST AND SUPPRESSION TO MEET NFPA 96 AND NFPA 17A.  
BASIS FOR CODE SUMMARY IS NFPA 101-2009 FOR EXISTING MIXED USE BUILDING - ASSEMBLY, STORAGE, BUSINESS

### NOTES

- THE LISTED UPGRADES ASSUMES THE FIRE DEPARTMENT OPERATIONS ARE NO LONGER HOUSED IN THIS BUILDING THE COMMUNITY CENTER WILL REMAIN IN THE BUILDING AND THE STORAGE WILL BE MOVED TO THE AREAS PREVIOUSLY OCCUPIED BY THE FIRE DEPARTMENT AND TOWN MAINTENANCE STORAGE
- THE LISTED UPGRADES ONLY ADDRESS FIRE PROTECTION AND LIFE SAFETY.  
THE LISTED UPGRADES DO NOT ADDRESS ELECTRICAL, STRUCTURAL, OR ACCESSIBILITY REQUIREMENTS.  
CONTRACTOR WILL BE RESPONSIBLE FOR NECESSARY DOCUMENTS AND PERMITS WITH THE TOWN
1. SEAL TOP OF WALL AND ALL PENETRATIONS FOR 2 HOUR WALL (WALL LENGTH IS 108FT)
  2. REPLACE EXISTING DOOR AND FRAME WITH 1 1/2 HOUR DOOR AND FRAME WITH AUTO CLOSER AND POSITIVE LATCH IF EXISTING DOOR IS 1 1/2 HOUR RATED & IN GOOD CONDITION IT MAY REMAIN W/ AUTO CLOSER & POSITIVE LATCH
  3. INSTALL AUTO CLOSING ROLL UP 2 HOUR FIRE DOOR OPENING SIZE IS TWO AT 62x31 OR ONE AT 130x31
  4. RECONFIGURE FRONT OFFICE AREA AS SHOWN (ACCESSORY USE - NO RATING ON WALLS OR CEILING REQUIRED),
  5. RELOCATE ALL STORAGE IN AND ABOVE OFFICES TO ADJACENT STORAGE AREAS
  6. RELOCATE ALL STORAGE NEXT TO STAGE TO NEW STORAGE AREAS IN ADJACENT SPACE OLD FIRE STATION AND TOWN EQUIPMENT) DEMOLISH EXIST. WALLS AND FINISH TO ELIMINATE SHARP EDGES AND MAINTAIN WALK WAYS
  7. FILL VIDS AT TOP OF WALL AND COVER STEEL BEAM AND COLUMNS TO PROVIDE TWO HOUR SEPARATION SEAL ALL PENETRATIONS IN THE EXISTING CONCRETE BLOCK WALL FOR 2 HOUR WALL (WALL LENGTH IS 50 FT),
  8. UPGRADE EXISTING WALL TO 1 HOUR FIRE RATING-SINGLE LAYER OF 5/8" TYPE X DRYWALL ON BOTH SIDES (WALL LENGTH IS 51 FEET) NOTE ONLY THREE SIDES OF KITCHEN - FOURTH SIDE IS 2 HOUR.
  9. VERIFY CEILING IS 1 HOUR - SINGLE LAYER OF 5/8" TYPE X DRYWALL OR EQUIVALENT-AND IF NOT EXISTING,
  9. REPLACE EXISTING DOOR AND FRAME WITH 1 HOUR DOOR AND FRAME WITH AUTO CLOSER AND POSITIVE LATCH
  10. REMOVE EXISTING DOOR AND FRAME AND INFILL WITH 1 HOUR WALL CONSTRUCTION - SEE NOTE 8.
  11. INSTALL NEW HOOD AND DUCT TO MEET NFPA 96. EXISTING COOKING APPLIANCE INCLUDE 72x34 GAS STOVE AND 36x24 ELECTRIC GRIDDLE. HOOD IS REQUIRED TO EXTEND AT LEAST 6' BEYOND APPLIANCES.
  12. EXHAUST DUCT IS REQUIRED TO HAVE 1 HOUR FIRE RATED ENCLOSURE FROM HOOD TO OUTSIDE.
  12. INSTALL NEW WET CHEMICAL UL300 COMPLIANT FIRE SUPPRESSION SYSTEM FOR HOOD AND DUCT.
  13. REMOVE EXISTING ANSUL DRY CHEMICAL SYSTEM AND PIPING - THIS SYSTEM IS NO LONGER USABLE.
  13. REMOVE ALL STORAGE AND DEBRIS FROM THE BASEMENT-THIS SPACE TO BE USED FOR UTILITY ENTRANCE ONLY.
  14. INSTALL NEW BUILDING FIRE ALARM SYSTEM. MANUAL PULL STATIONS AT ALL EXITS (8), HEAT DETECTION THROUGHOUT ALL STORAGE AREAS TO INCLUDE BASEMENT AND MEZZANINE AREAS, SMOKE DETECTOR AT THE PANEL, CONNECT KITCHEN SUPPRESSION SYSTEM TO PANEL, OUTSIDE STROBE, STROBE/VOICE ALARMS THROUGHOUT BUILDING, AND CENTRAL STATION MONITOR FOR FIRE DEPARTMENT NOTIFICATION.



### MAIN FLOOR PLAN

SCALE: 1/4"=1'-0"

### ROBERT CUMMINGS & ASSOCIATES, PLLC

ROBERT B. CUMMINGS FPE (NH No. 9628)

181 Bow Bog Road Bow, NH 03304  
(603)496-3933 F(603)224-7467

rbcbcfpe@comcast.net

### FIRE PROTECTION & LIFE SAFETY UPGRADES

COMMUNITY CENTER  
2 KNOX ROAD  
BOW, NEW HAMPSHIRE

REVISIONS
DRAWN BY
RB CUMMINGS
DATE
2-28-14
SCALE
AS NOTED

FIRE PROTECTION & LIFE SAFETY UPGRADES COMMUNITY CENTER 2 KNOX ROAD BOW, NEW HAMPSHIRE		
DWG. NO.		SHEET 1 OF 1