

Bow Natural Resources Inventory Conservation Focus Areas

Map Description:
This map shows sites that have been identified as Conservation Focus Areas (CFAs) in Bow. These CFAs were based on 3 different co-occurrence analyses for water resources, ecological resources, and agriculture and forest resources. In addition to these resources, CFAs were also identified based on their location within regional conservation plans including the Wildlife Action Plan and the Merrimack Watershed Conservation Plan, unfragmented landscape, presence of rare species, and connectedness to existing conservation lands. This map provides the Bow Conservation Commission with a sense of where they should focus their conservation planning efforts to maximize natural resources protection for its community.

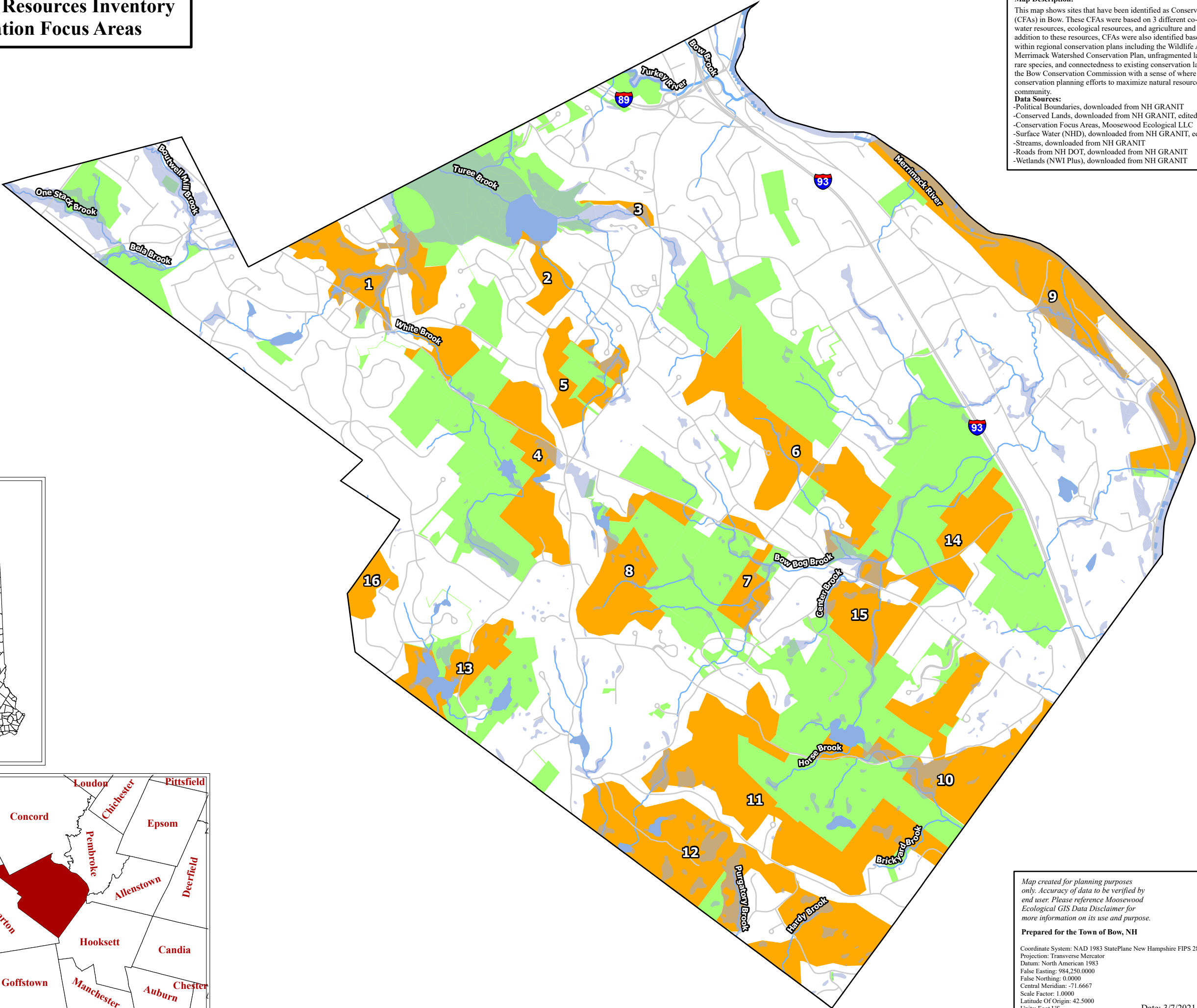
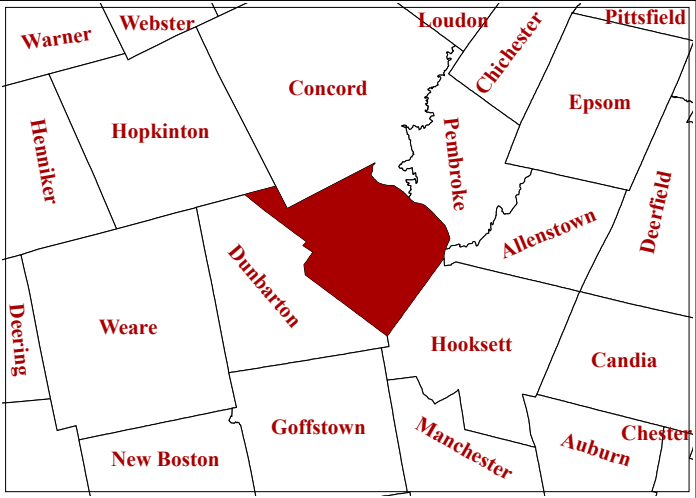
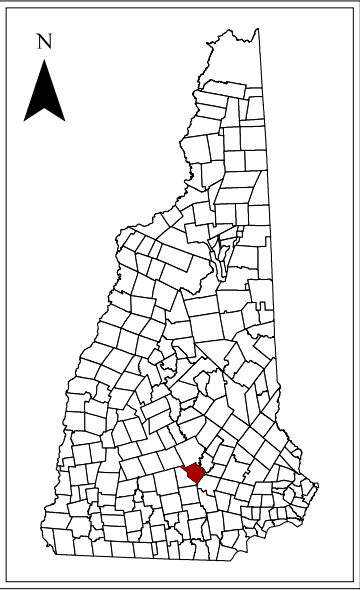
Data Sources:
-Political Boundaries, downloaded from NH GRANIT
-Conserved Lands, downloaded from NH GRANIT, edited by Moosewood
-Conservation Focus Areas, Moosewood Ecological LLC
-Surface Water (NHD), downloaded from NH GRANIT, edited by Moosewood
-Streams, downloaded from NH GRANIT
-Roads from NH DOT, downloaded from NH GRANIT
-Wetlands (NWI Plus), downloaded from NH GRANIT

Legend

- Town of Bow
- Roads
- Wetlands
- Ponds
- Streams: Order ≤ 3
- Streams: Order ≥ 4
- Conserved Lands
- Conservation Focus Areas

1:42,000

0 0.5 1 Mi



Map created for planning purposes only. Accuracy of data to be verified by end user. Please reference Moosewood Ecological GIS Data Disclaimer for more information on its use and purpose.

Prepared for the Town of Bow, NH

Coordinate System: NAD 1983 StatePlane New Hampshire FIPS 2800 Feet
Projection: Transverse Mercator
Datum: North American 1983
False Easting: 984,250,000
False Northing: 0.0000
Central Meridian: -71.6667
Scale Factor: 1.0000
Latitude Of Origin: 42.5000
Units: Foot US

Moosewood Ecological LLC
Innovative Conservation and
Land Management Solutions

Jeffrey N. Littleton, M.S.
Conservation Ecologist
(603) 831-1980
Moosewood Ecological LLC
Innovative Conservation Solutions for New England

Date: 3/7/2021