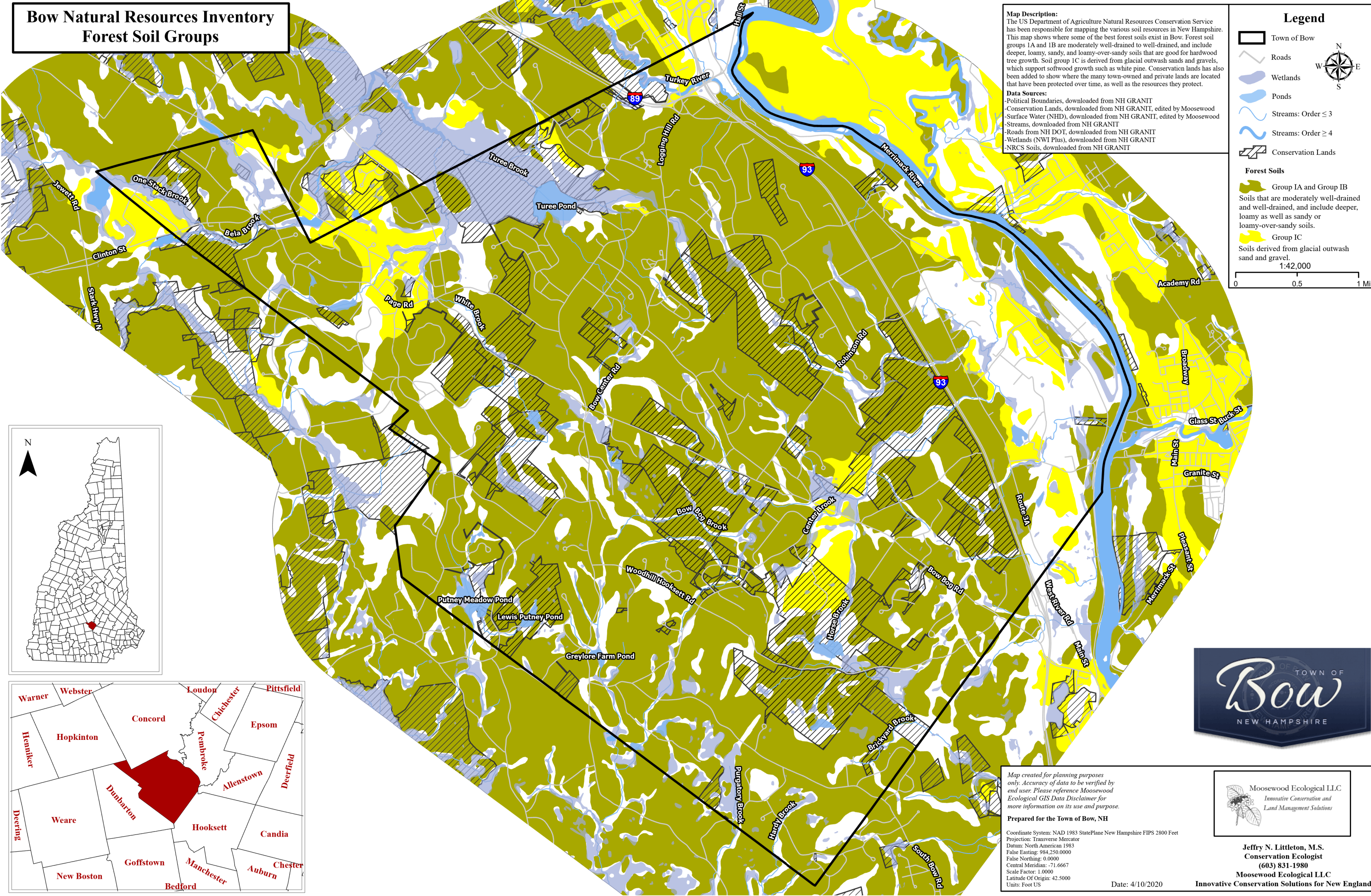


Bow Natural Resources Inventory
Forest Soil Groups



Map Description:
The US Department of Agriculture Natural Resources Conservation Service has been responsible for mapping the various soil resources in New Hampshire. This map shows where some of the best forest soils exist in Bow. Forest soil groups 1A and 1B are moderately well-drained to well-drained, and include deeper, loamy, sandy, and loamy-over-sandy soils that are good for hardwood tree growth. Soil group 1C is derived from glacial outwash sands and gravels, which support softwood growth such as white pine. Conservation lands has also been added to show where the many town-owned and private lands are located that have been protected over time, as well as the resources they protect.

Data Sources:
-Political Boundaries, downloaded from NH GRANIT
-Conservation Lands, downloaded from NH GRANIT, edited by Moosewood
-Surface Water (NHD), downloaded from NH GRANIT, edited by Moosewood
-Streams, downloaded from NH GRANIT
-Roads from NH DOT, downloaded from NH GRANIT
-Wetlands (NWI Plus), downloaded from NH GRANIT
-NRCS Soils, downloaded from NH GRANIT

Legend

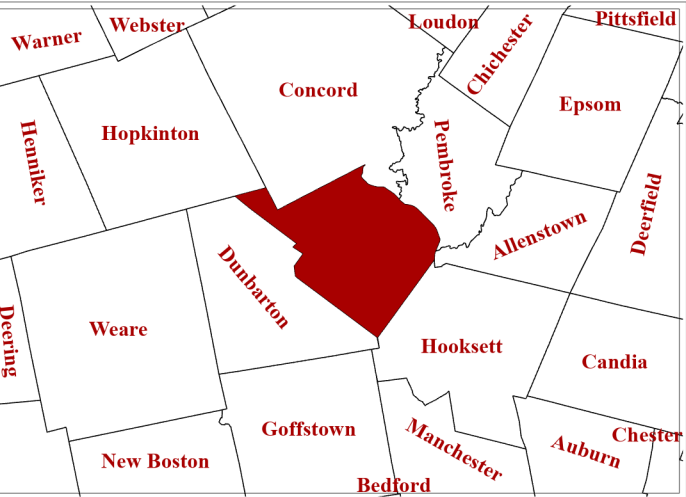
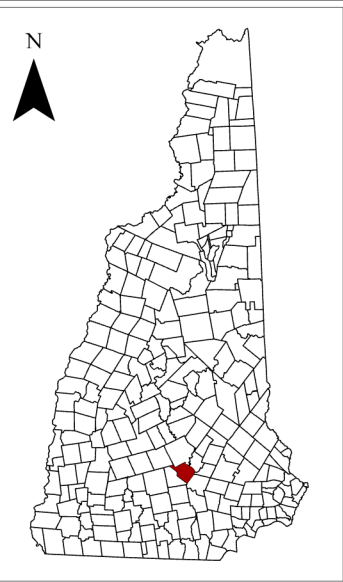
- Town of Bow
- Roads
- Wetlands
- Ponds
- Streams: Order ≤ 3
- Streams: Order ≥ 4
- Conservation Lands

Forest Soils

- Group IA and Group IB
Soils that are moderately well-drained and well-drained, and include deeper, loamy as well as sandy or loamy-over-sandy soils.
- Group IC
Soils derived from glacial outwash sand and gravel.

1:42,000

0 0.5 1 Mi



Map created for planning purposes only. Accuracy of data to be verified by end user. Please reference Moosewood Ecological GIS Data Disclaimer for more information on its use and purpose.

Prepared for the Town of Bow, NH

Coordinate System: NAD 1983 StatePlane New Hampshire FIPS 2800 Feet
Projection: Transverse Mercator
Datum: North American 1983
False Easting: 984,250.0000
False Northing: 0.0000
Central Meridian: -71.6667
Scale Factor: 1.0000
Latitude Of Origin: 42.5000
Units: Foot US

Date: 4/10/2020

Moosewood Ecological LLC
Innovative Conservation and
Land Management Solutions

Jeffrey N. Littleton, M.S.
Conservation Ecologist
(603) 831-1980
Moosewood Ecological LLC
Innovative Conservation Solutions for New England