

Bow Natural Resources Inventory  
Conservation and Public Lands

**Map Description:**

Bow is fortunate to have a variety of town-owned lands and private properties that are conserved. This is vital to protecting the town's natural and cultural history, as well as providing spaces for recreation such as hiking, biking, hunting, fishing, cross-country skiing, and snowmobiling. Land is protected in a variety of ways, including the most commonly used conservation easement. However, there are still areas vulnerable to land uses that can negatively impact rare species and significant habitats. Therefore, this natural resources inventory (NRI) seeks to identify additional areas that may deserve formal protection.

**Data Sources:**

- Political Boundaries, downloaded from NH GRANIT
- Conservation Lands, downloaded from NH GRANIT, edited by Moosewood
- Surface Water (NHD), downloaded from NH GRANIT, edited by Moosewood
- Streams, downloaded from NH GRANIT
- Roads from NH DOT, downloaded from NH GRANIT
- Wetlands (NWI Plus), downloaded from NH GRANIT
- Town parcels, downloaded from NH GRANIT

**Legend**

Town of Bow

Roads

Wetlands

Ponds

Streams: Order ≤ 3

Streams: Order ≥ 4

Town-Owned Lands

**Protection Type**

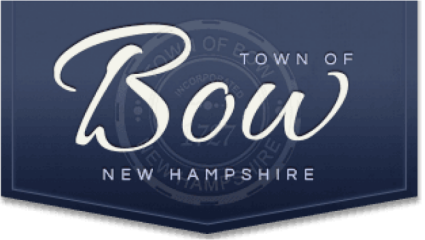
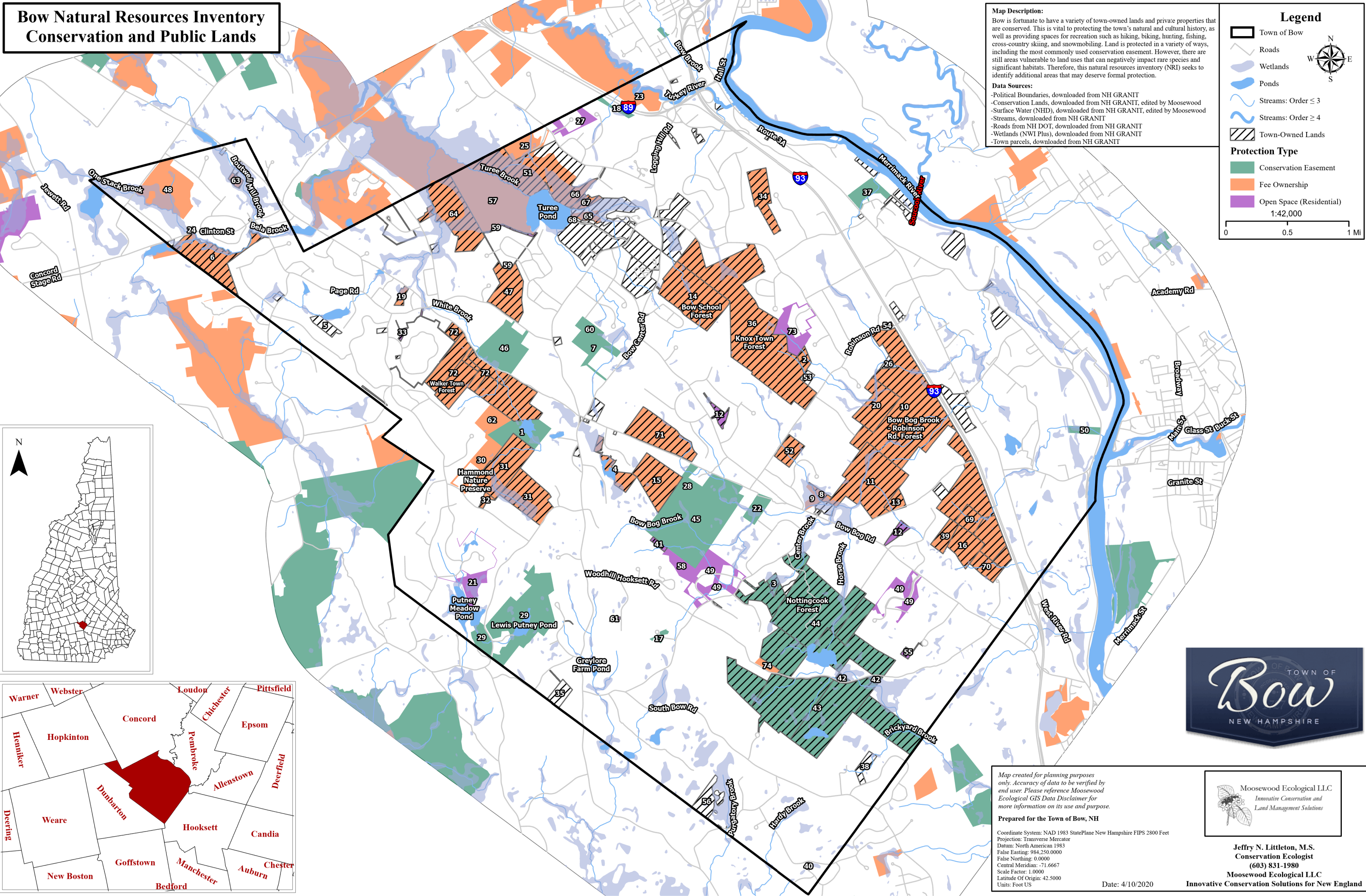
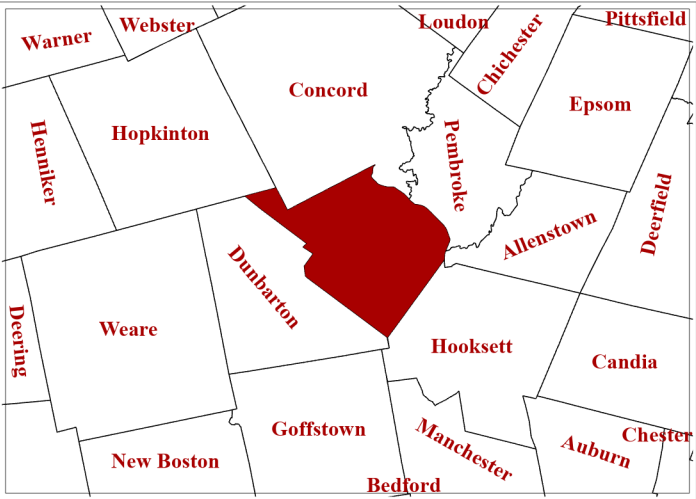
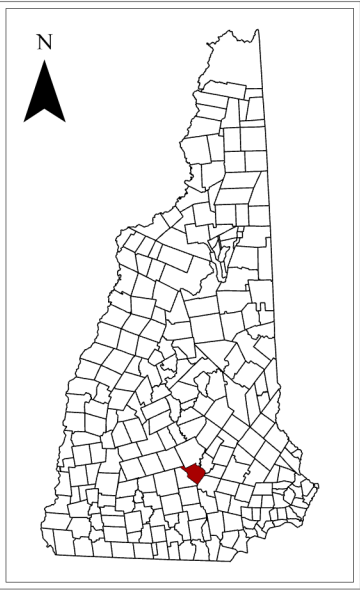
Conservation Easement

Fee Ownership

Open Space (Residential)

1:42,000

0 0.5 1 Mi



Map created for planning purposes only. Accuracy of data to be verified by end user. Please reference Moosewood Ecological GIS Data Disclaimer for more information on its use and purpose.

Prepared for the Town of Bow, NH

Coordinate System: NAD 1983 StatePlane New Hampshire FIPS 2800 Feet  
Projection: Transverse Mercator  
Datum: North American 1983  
False Easting: 984,250,000  
False Northing: 0.0000  
Central Meridian: -71.6667  
Scale Factor: 1.0000  
Latitude Of Origin: 42.5000  
Units: Foot US

Date: 4/10/2020

Jeffrey N. Littleton, M.S.  
Conservation Ecologist  
(603) 831-1980  
Moosewood Ecological LLC  
Innovative Conservation Solutions for New England