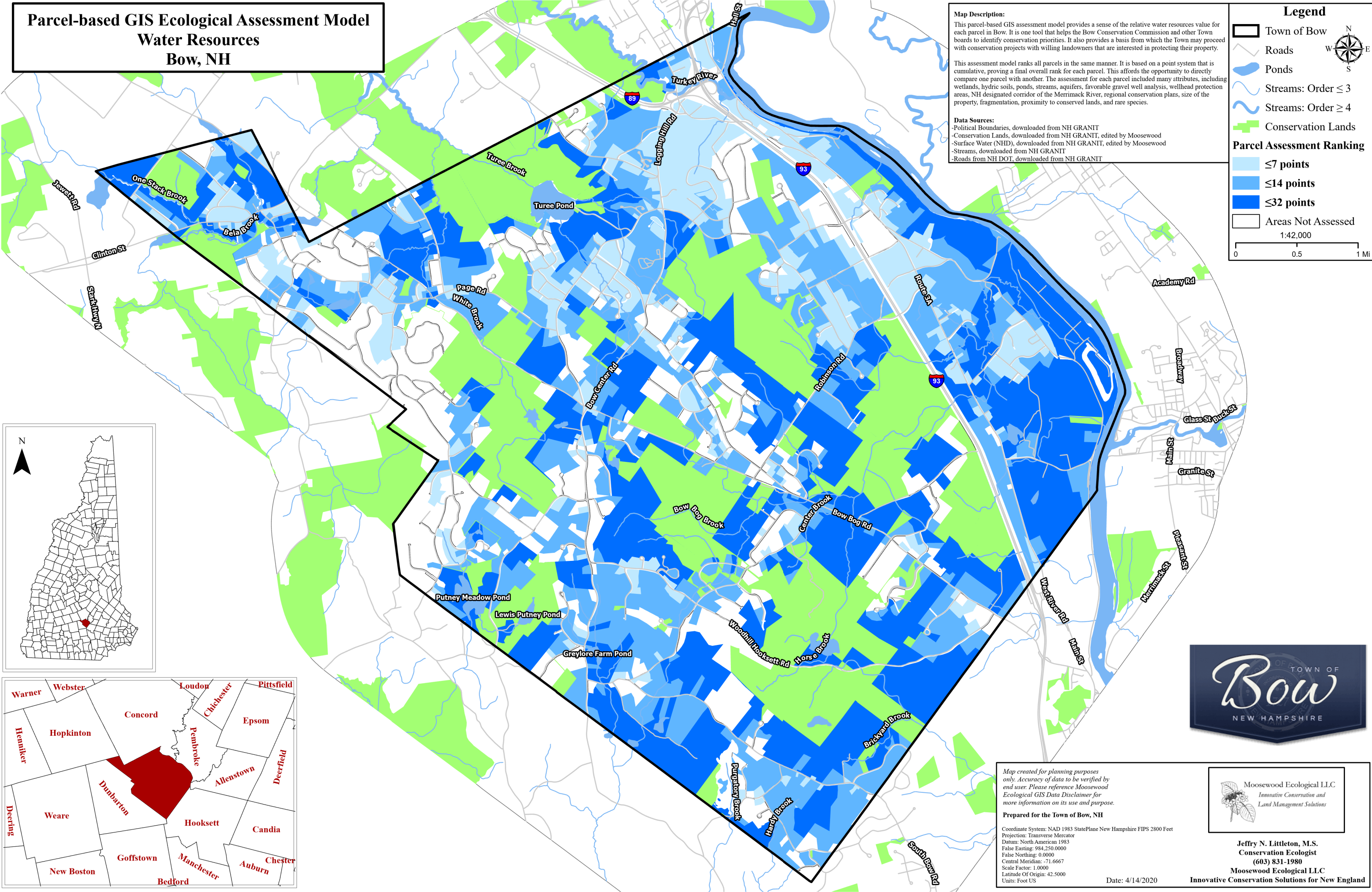


Parcel-based GIS Ecological Assessment Model
Water Resources
Bow, NH



Map Description:

This parcel-based GIS assessment model provides a sense of the relative water resources value for each parcel in Bow. It is one tool that helps the Bow Conservation Commission and other Town boards to identify conservation priorities. It also provides a basis from which the Town may proceed with conservation projects with willing landowners that are interested in protecting their property.

This assessment model ranks all parcels in the same manner. It is based on a point system that is cumulative, proving a final overall rank for each parcel. This affords the opportunity to directly compare one parcel with another. The assessment for each parcel included many attributes, including wetlands, hydric soils, ponds, streams, aquifers, favorable gravel well analysis, wellhead protection areas, NH designated corridor of the Merrimack River, regional conservation plans, size of the property, fragmentation, proximity to conserved lands, and rare species.

Data Sources:

- Political Boundaries, downloaded from NH GRANIT
- Conservation Lands, downloaded from NH GRANIT, edited by Moosewood
- Surface Water (NHD), downloaded from NH GRANIT, edited by Moosewood
- Streams, downloaded from NH GRANIT
- Roads from NH DOT, downloaded from NH GRANIT

Legend

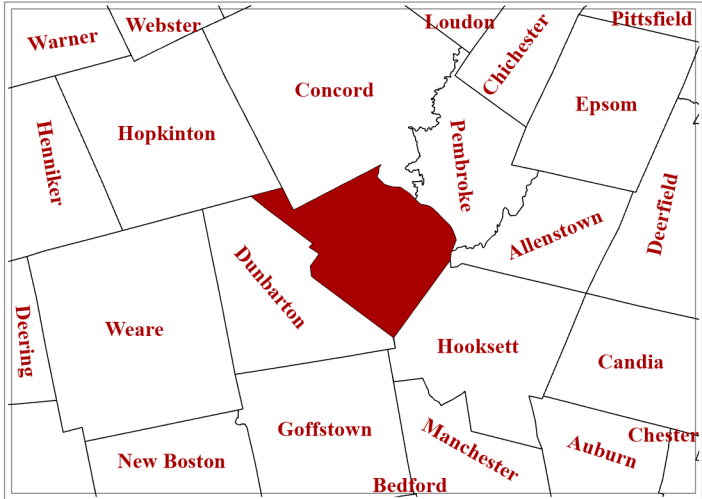
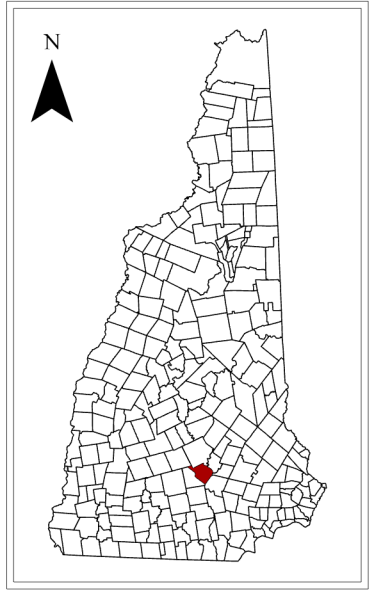
- Town of Bow
- Roads
- Ponds
- Streams: Order ≤ 3
- Streams: Order ≥ 4
- Conservation Lands

Parcel Assessment Ranking

- ≤ 7 points
- ≤ 14 points
- ≤ 32 points
- Areas Not Assessed

1:42,000

0 0.5 1 Mi



Map created for planning purposes only. Accuracy of data to be verified by end user. Please reference Moosewood Ecological GIS Data Disclaimer for more information on its use and purpose.

Prepared for the Town of Bow, NH

Coordinate System: NAD 1983 StatePlane New Hampshire FIPS 2800 Feet
Projection: Transverse Mercator
Datum: North American 1983
False Easting: 984,250,000
False Northing: 0.0000
Central Meridian: -71.6667
Scale Factor: 1.0000
Latitude Of Origin: 42.5000
Units: Foot US

Moosewood Ecological LLC
Innovative Conservation and
Land Management Solutions

Jeffrey N. Littleton, M.S.
Conservation Ecologist
(603) 831-1980
Moosewood Ecological LLC
Innovative Conservation Solutions for New England

Date: 4/14/2020