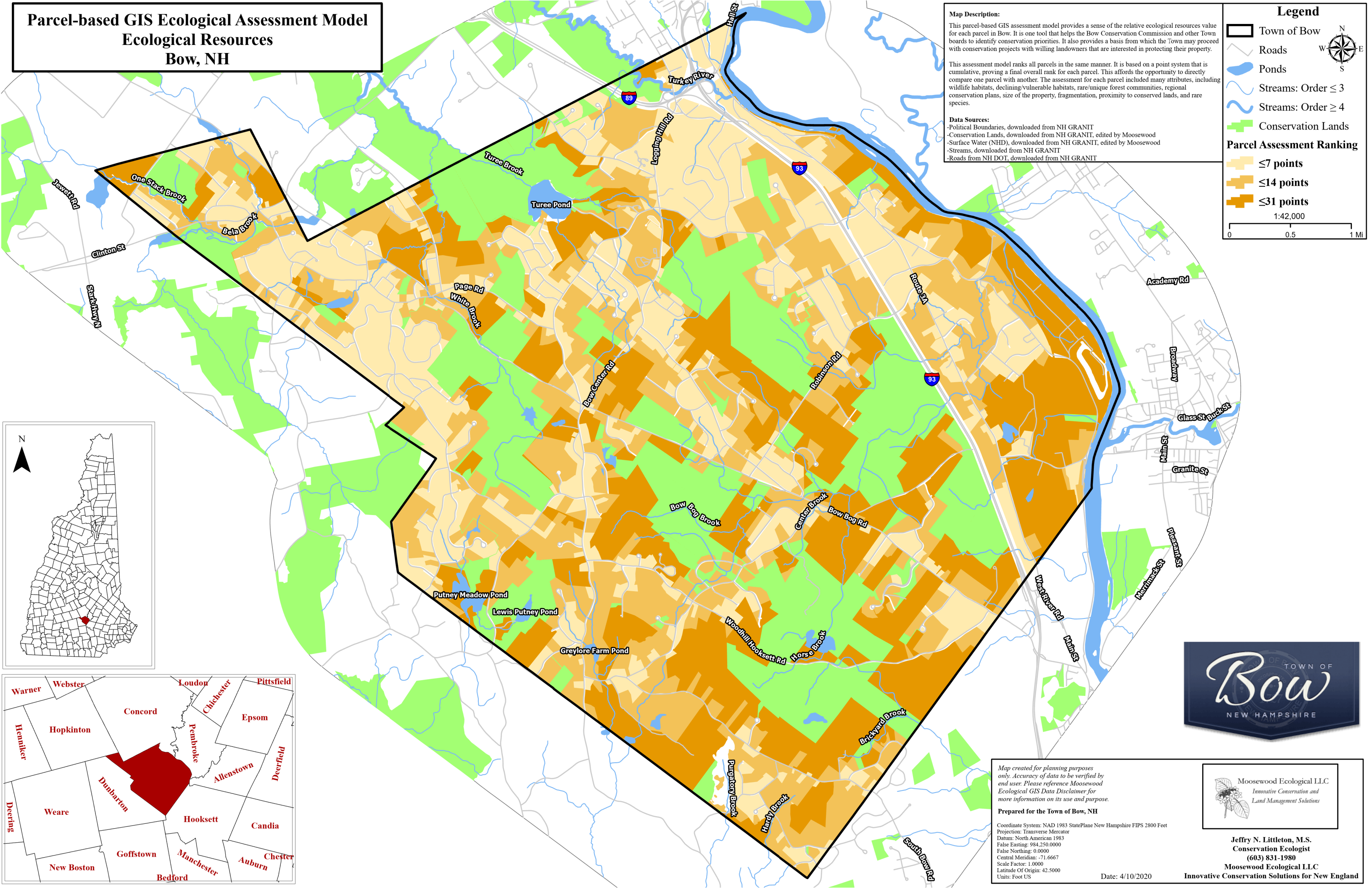


Parcel-based GIS Ecological Assessment Model  
Ecological Resources  
Bow, NH



**Map Description:**  
This parcel-based GIS assessment model provides a sense of the relative ecological resources value for each parcel in Bow. It is one tool that helps the Bow Conservation Commission and other Town boards to identify conservation priorities. It also provides a basis from which the Town may proceed with conservation projects with willing landowners that are interested in protecting their property.

This assessment model ranks all parcels in the same manner. It is based on a point system that is cumulative, proving a final overall rank for each parcel. This affords the opportunity to directly compare one parcel with another. The assessment for each parcel included many attributes, including wildlife habitats, declining/vulnerable habitats, rare/unique forest communities, regional conservation plans, size of the property, fragmentation, proximity to conserved lands, and rare species.

**Data Sources:**  
-Political Boundaries, downloaded from NH GRANIT  
-Conservation Lands, downloaded from NH GRANIT, edited by Moosewood  
-Surface Water (NHD), downloaded from NH GRANIT, edited by Moosewood  
-Streams, downloaded from NH GRANIT  
-Roads from NH DOT, downloaded from NH GRANIT

**Legend**

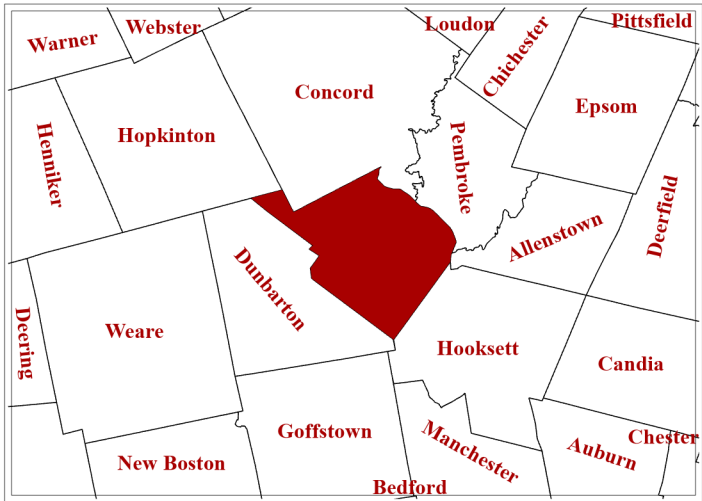
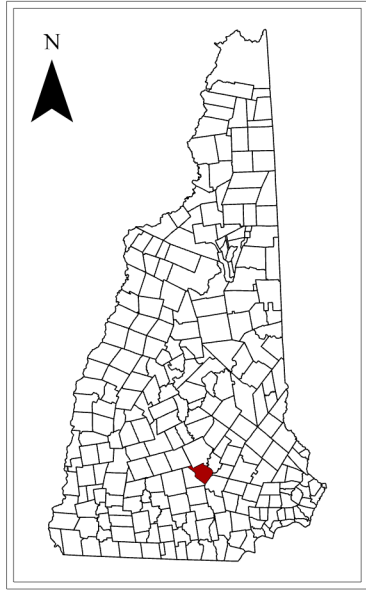
- Town of Bow
- Roads
- Ponds
- Streams: Order  $\leq 3$
- Streams: Order  $\geq 4$
- Conservation Lands

**Parcel Assessment Ranking**

- $\leq 7$  points
- $\leq 14$  points
- $\leq 31$  points

1:42,000

0 0.5 1 Mi



Map created for planning purposes only. Accuracy of data to be verified by end user. Please reference Moosewood Ecological GIS Data Disclaimer for more information on its use and purpose.

**Prepared for the Town of Bow, NH**

Coordinate System: NAD 1983 StatePlane New Hampshire FIPS 2800 Feet  
Projection: Transverse Mercator  
Datum: North American 1983  
False Easting: 984,250,000  
False Northing: 0.0000  
Central Meridian: -71.6667  
Scale Factor: 1.0000  
Latitude Of Origin: 42.5000  
Units: Foot US

Date: 4/10/2020

**Moosewood Ecological LLC**  
Innovative Conservation and Land Management Solutions

**Jeffrey N. Littleton, M.S.**  
Conservation Ecologist  
(603) 831-1980  
Moosewood Ecological LLC  
Innovative Conservation Solutions for New England