

Bow Natural Resources Inventory  
Unfragmented Lands

**Map Description:**  
The NH Fish and Game Wildlife Action Plan mapped unfragmented lands throughout the state. This assumes that most developments occur within 500 feet on either side of roads, excluding private driveways and Class VI roads. Unfragmented lands include areas that are typically not affected by roads, including those found in urban, suburban, and rural residential areas. Many species of wildlife need large, unfragmented areas for survival. Protecting these areas is important for maintaining biodiversity. Conservation lands have also been added to show where the many town-owned and private lands are located that have been protected over time, as well as the resources they protect.

**Data Sources:**  
-Political Boundaries, downloaded from NH GRANIT  
-Conservation Lands, downloaded from NH GRANIT, edited by Moosewood  
-Surface Water (NHD), downloaded from NH GRANIT, edited by Moosewood  
-Streams, downloaded from NH GRANIT  
-Roads from NH DOT, downloaded from NH GRANIT  
-Wetlands (NWI Plus), downloaded from NH GRANIT  
-Unfragmented Lands, NH Fish and Game

**Legend**

Town of Bow

Roads

Ponds

Wetlands

Conservation Lands

Unfragmented Lands

50-250 acres

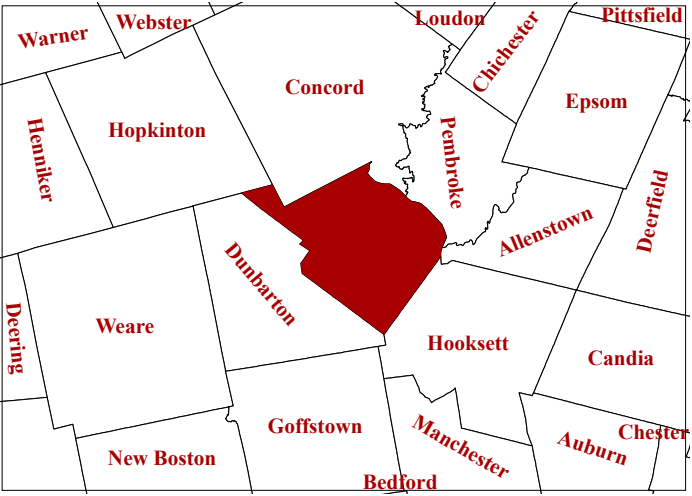
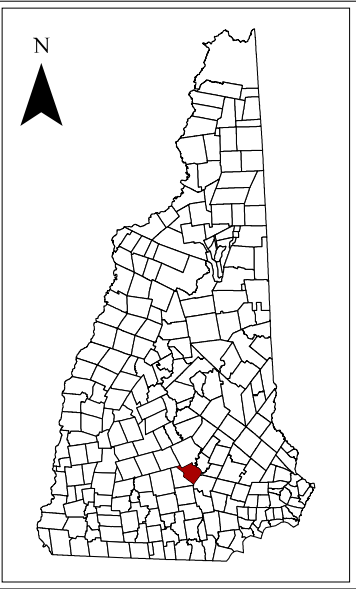
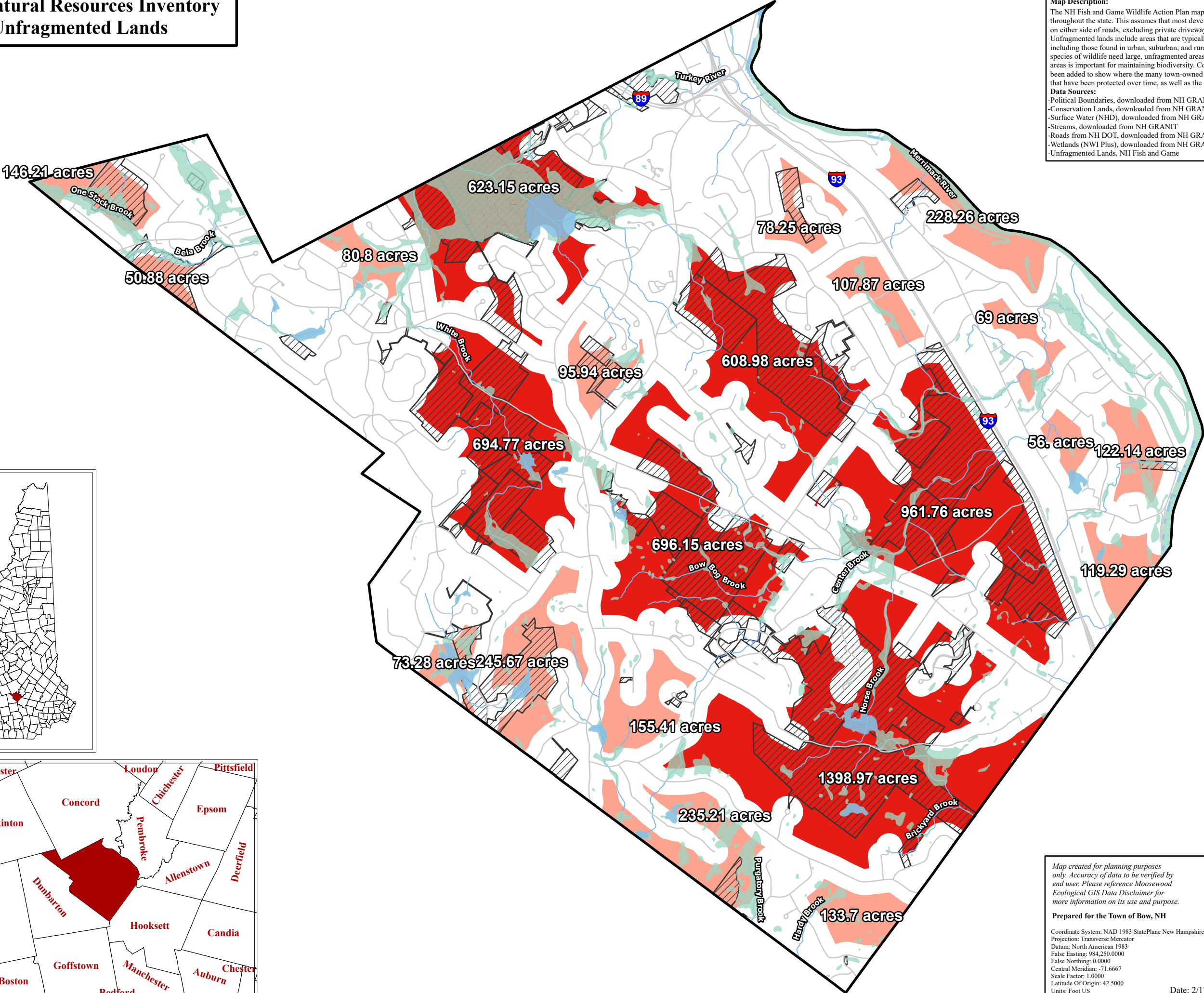
250-500 acres

greater than 500 acres

1:42,000

0 0.5 1 Mi

N  
W  
E  
S



Map created for planning purposes only. Accuracy of data to be verified by end user. Please reference Moosewood Ecological GIS Data Disclaimer for more information on its use and purpose.

Prepared for the Town of Bow, NH

Coordinate System: NAD 1983 StatePlane New Hampshire FIPS 2800 Feet  
Projection: Transverse Mercator  
Datum: North American 1983  
False Easting: 984,250.0000  
False Northing: 0.0000  
Central Meridian: -71.6667  
Scale Factor: 1.0000  
Latitude Of Origin: 42.5000  
Units: Foot US

Moosewood Ecological LLC  
Innovative Conservation and Land Management Solutions

Jeffrey N. Littleton, M.S.  
Conservation Ecologist  
(603) 831-1980  
Moosewood Ecological LLC  
Innovative Conservation Solutions for New England

Date: 2/17/2021