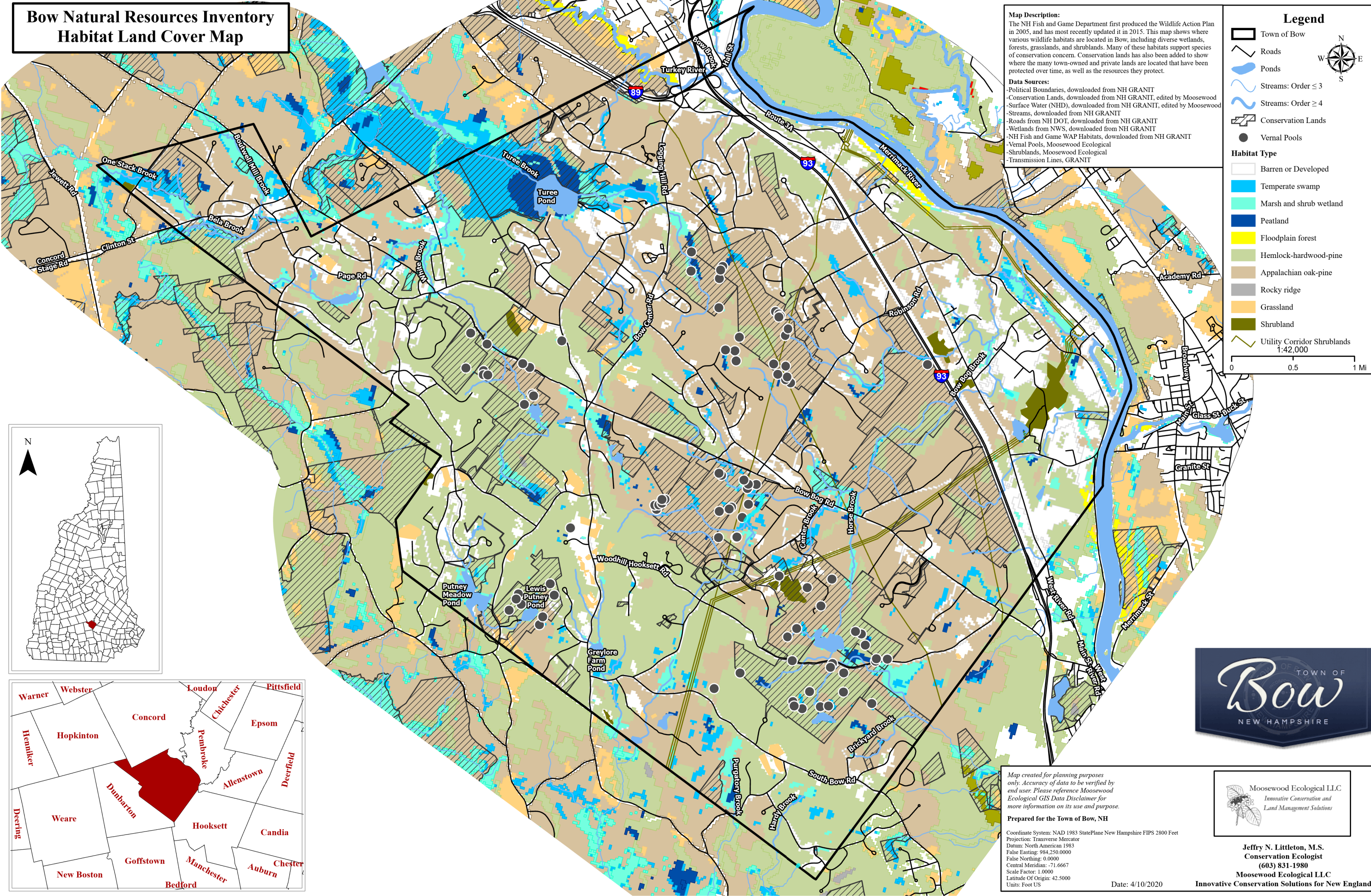


**Bow Natural Resources Inventory
Habitat Land Cover Map**



Map Description:
The NH Fish and Game Department first produced the Wildlife Action Plan in 2005, and has most recently updated it in 2015. This map shows where various wildlife habitats are located in Bow, including diverse wetlands, forests, grasslands, and shrublands. Many of these habitats support species of conservation concern. Conservation lands has also been added to show where the many town-owned and private lands are located that have been protected over time, as well as the resources they protect.

Data Sources:
-Political Boundaries, downloaded from NH GRANIT
-Conservation Lands, downloaded from NH GRANIT, edited by Moosewood
-Surface Water (NHD), downloaded from NH GRANIT, edited by Moosewood
-Streams, downloaded from NH GRANIT
-Roads from NH DOT, downloaded from NH GRANIT
-Wetlands from NWS, downloaded from NH GRANIT
-NH Fish and Game WAP Habitats, downloaded from NH GRANIT
-Vernal Pools, Moosewood Ecological
-Shrublands, Moosewood Ecological
-Transmission Lines, GRANIT

Legend

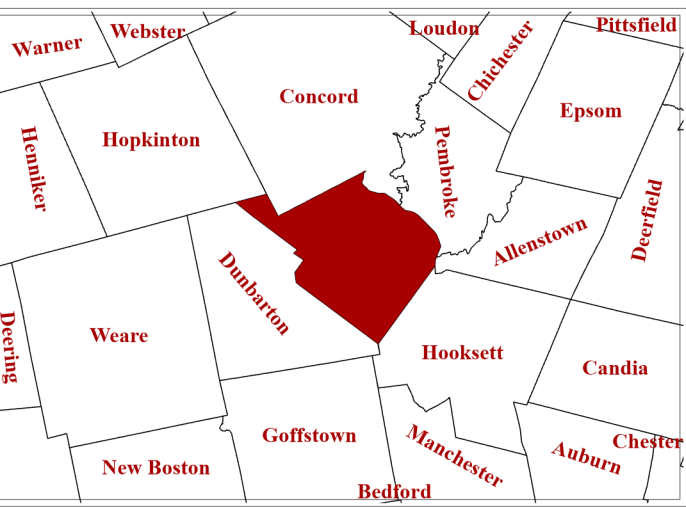
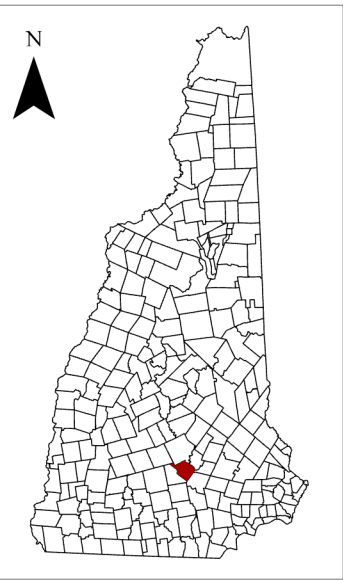
- Town of Bow
- Roads
- Ponds
- Streams: Order ≤ 3
- Streams: Order ≥ 4
- Conservation Lands
- Vernal Pools

Habitat Type

- Barren or Developed
- Temperate swamp
- Marsh and shrub wetland
- Peatland
- Floodplain forest
- Hemlock-hardwood-pine
- Appalachian oak-pine
- Rocky ridge
- Grassland
- Shrubland
- Utility Corridor Shrublands

1:42,000

0 0.5 1 Mi



Map created for planning purposes only. Accuracy of data to be verified by end user. Please reference Moosewood Ecological GIS Data Disclaimer for more information on its use and purpose.

Prepared for the Town of Bow, NH

Coordinate System: NAD 1983 StatePlane New Hampshire FIPS 2800 Feet
Projection: Transverse Mercator
Datum: North American 1983
False Easting: 984,250,000
False Northing: 0.0000
Central Meridian: -71.6667
Scale Factor: 1.0000
Latitude Of Origin: 42.5000
Units: Foot US

Moosewood Ecological LLC
Innovative Conservation and
Land Management Solutions

Jeffrey N. Littleton, M.S.
Conservation Ecologist
(603) 831-1980
Moosewood Ecological LLC
Innovative Conservation Solutions for New England