

TOWN OF BOW, NEW HAMPSHIRE  
DRINKING WATER PROTECTION COMMITTEE

Brown Hill Road Area Water Quality Study

June 2016

# FIGURES

Figure 1-1 – Study Area

Figure 2-1 – Private Wells Sampled

Figure 3-1 – Corrosion Complaints and Area Drainage

Figure 3-2 – Chloride Levels in Wells Sampled

Figure 3-3 – Wells with pH Values less than 7

Figure 3-4 – Seasonal Variability of Specific Conductance and pH

Figure 3-5 – Bedrock Geology in the Study Area

Figure 3-6 – Correlation of Chloride and Specific Conductance Levels

Figure 3-7 – Drainage Ditches Brown Hill Rd and Bona Vista Dr

Figure 3-8 - Arsenic and Uranium Levels in Wells Sampled

Figure 1-1 – Study Area

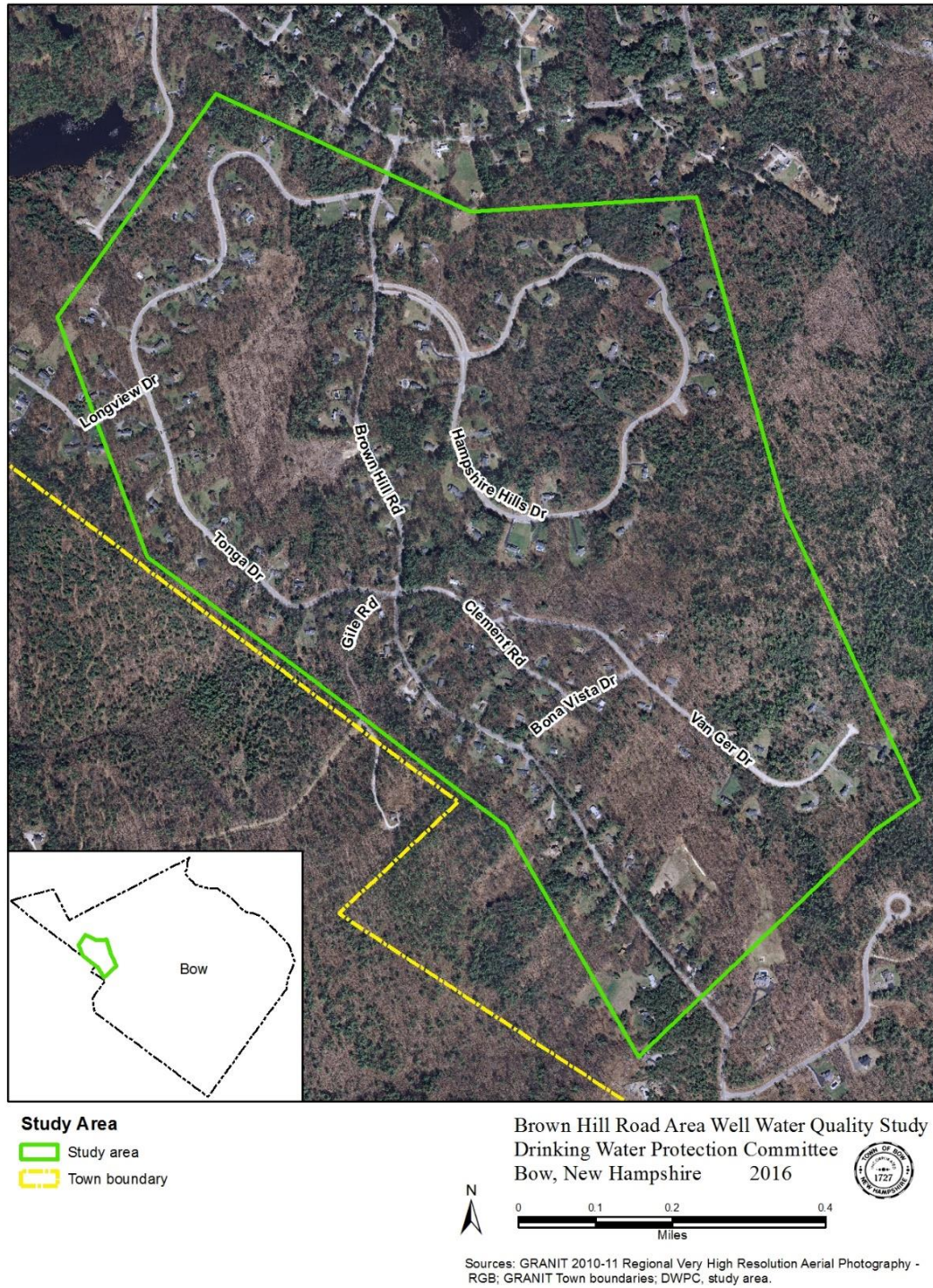




Figure 2-1 – Private Wells Sampled





Figure 3-1 – Corrosion Complaints and Brine Discharges

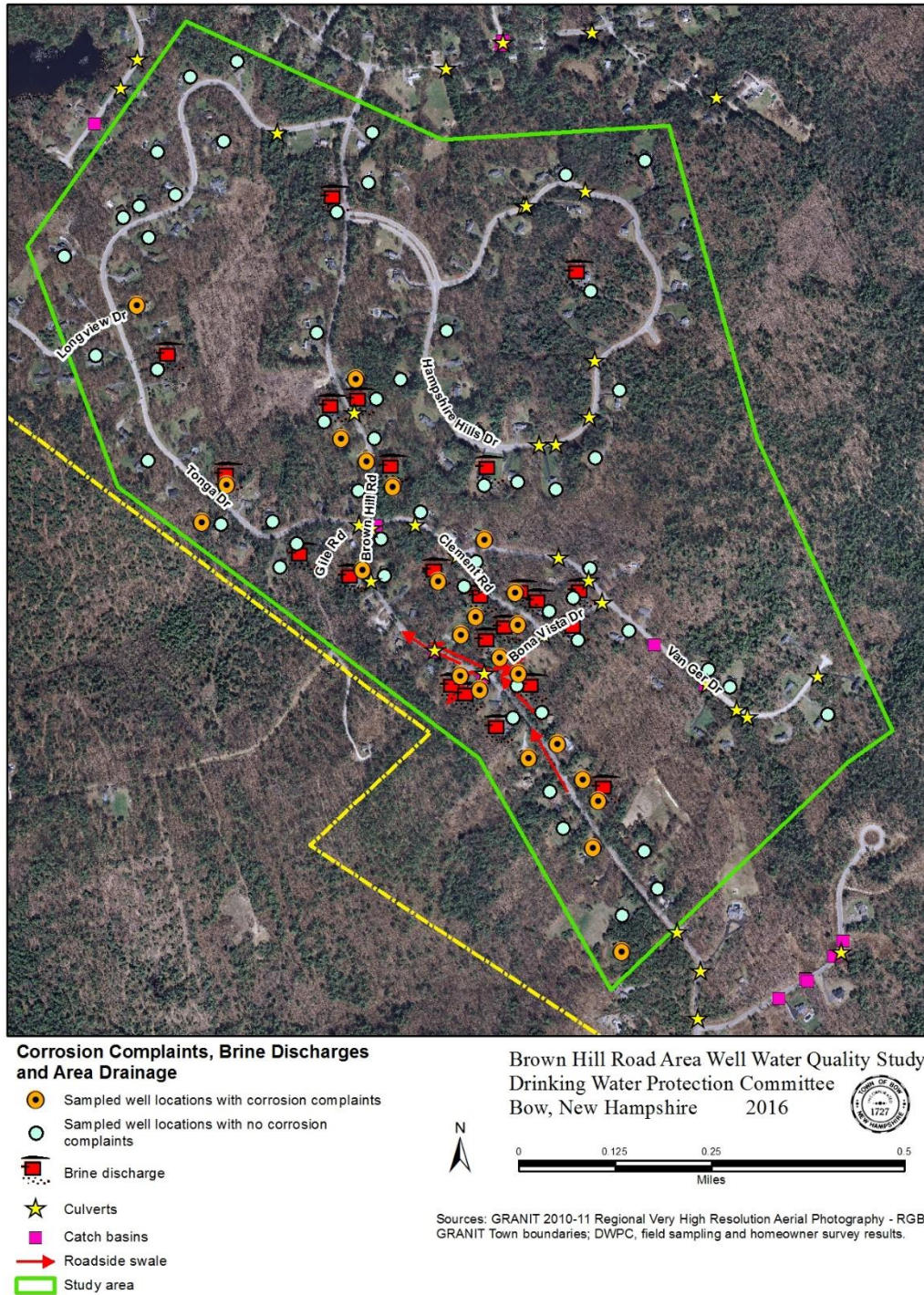
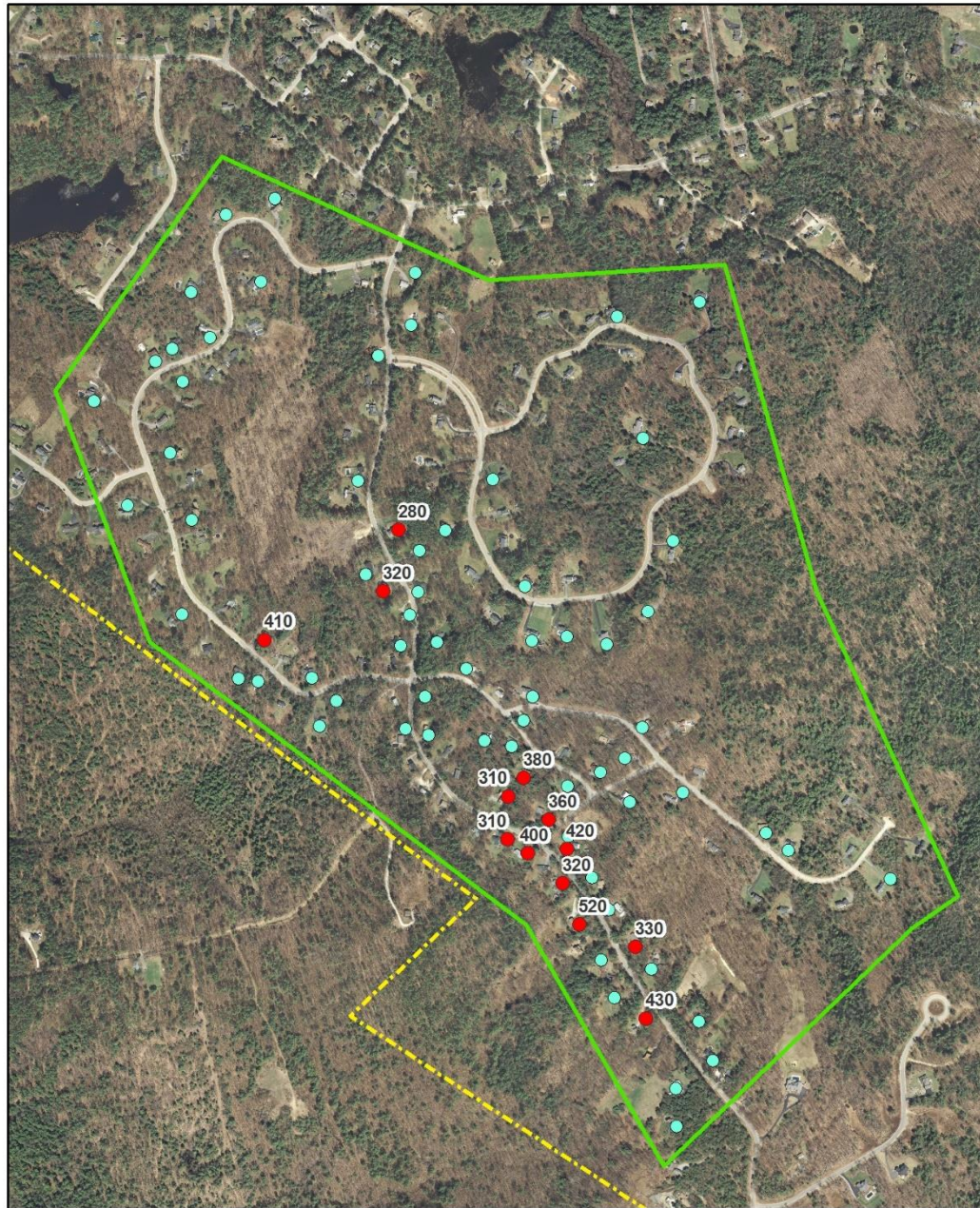




Figure 3-2 – Chloride Levels in Wells Sampled

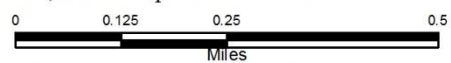


**Chloride Levels in Wells Sampled**

- 1 - 249 mg/L
- 250 - 520 mg/L
- Study area



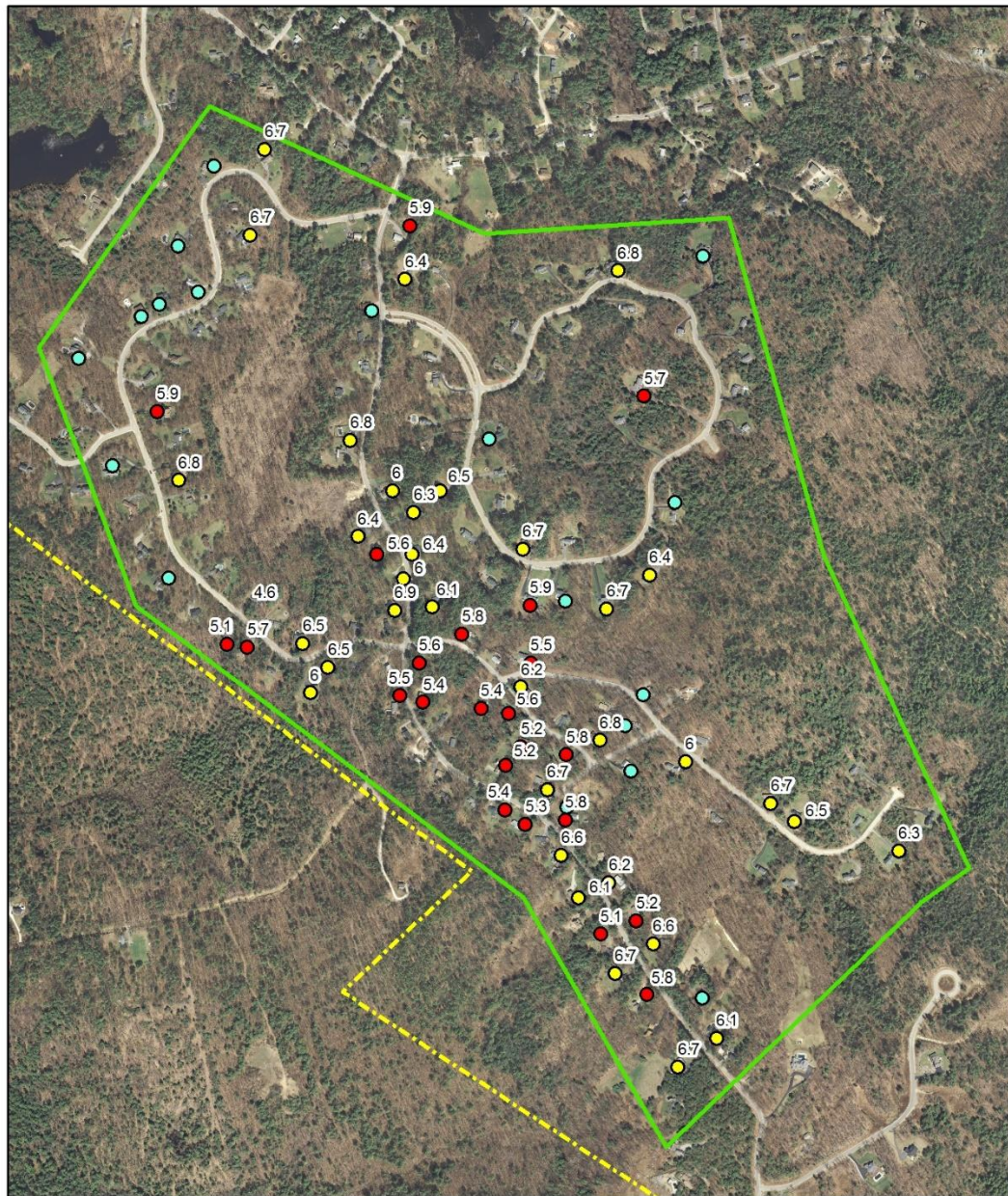
Brown Hill Road Area Well Water Quality Study  
Drinking Water Protection Committee  
Bow, New Hampshire 2016



Sources: GRANIT 2010-11 Regional Very High Resolution Aerial Photography - RGB; GRANIT Town boundaries; USEPA sampling results



Figure 3-3 – Wells with pH Values less than 7

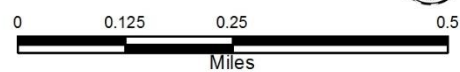


**Wells with pH Values Less Than 7**

Labeled where pH < 7

- < 6
- 6 to < 7
- ≥ 7
- ▭ Study area

Brown Hill Road Area Well Water Quality Study  
Drinking Water Protection Committee  
Bow, New Hampshire 2016



Sources: GRANIT 2010-11 Regional Very High Resolution Aerial Photography - RGB;  
GRANIT Town boundaries; USEPA sampling results.

Figure 3-4 – Seasonal Variability of Specific Conductance and pH

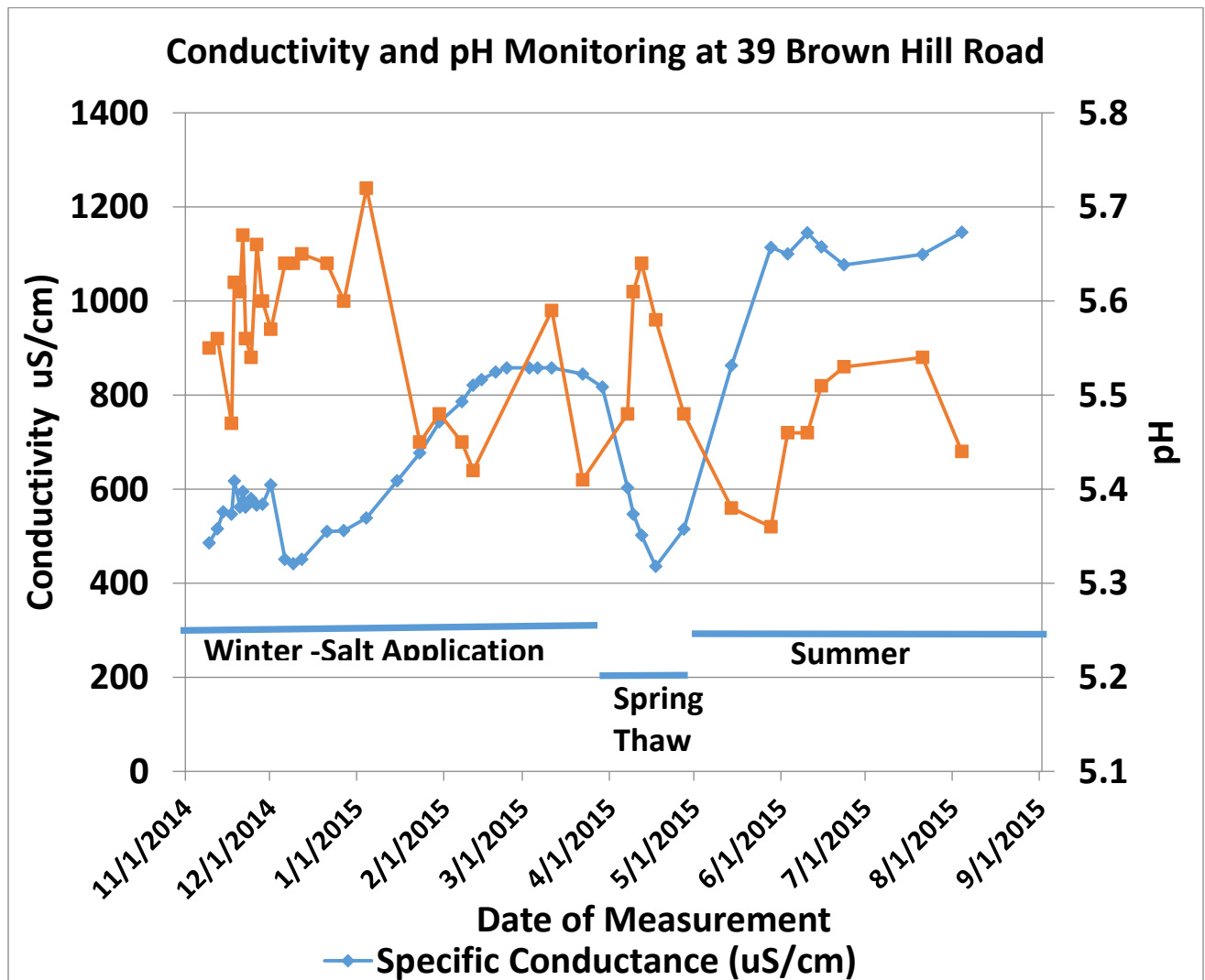


Figure 3-5 – Bedrock Geology in the Study Area

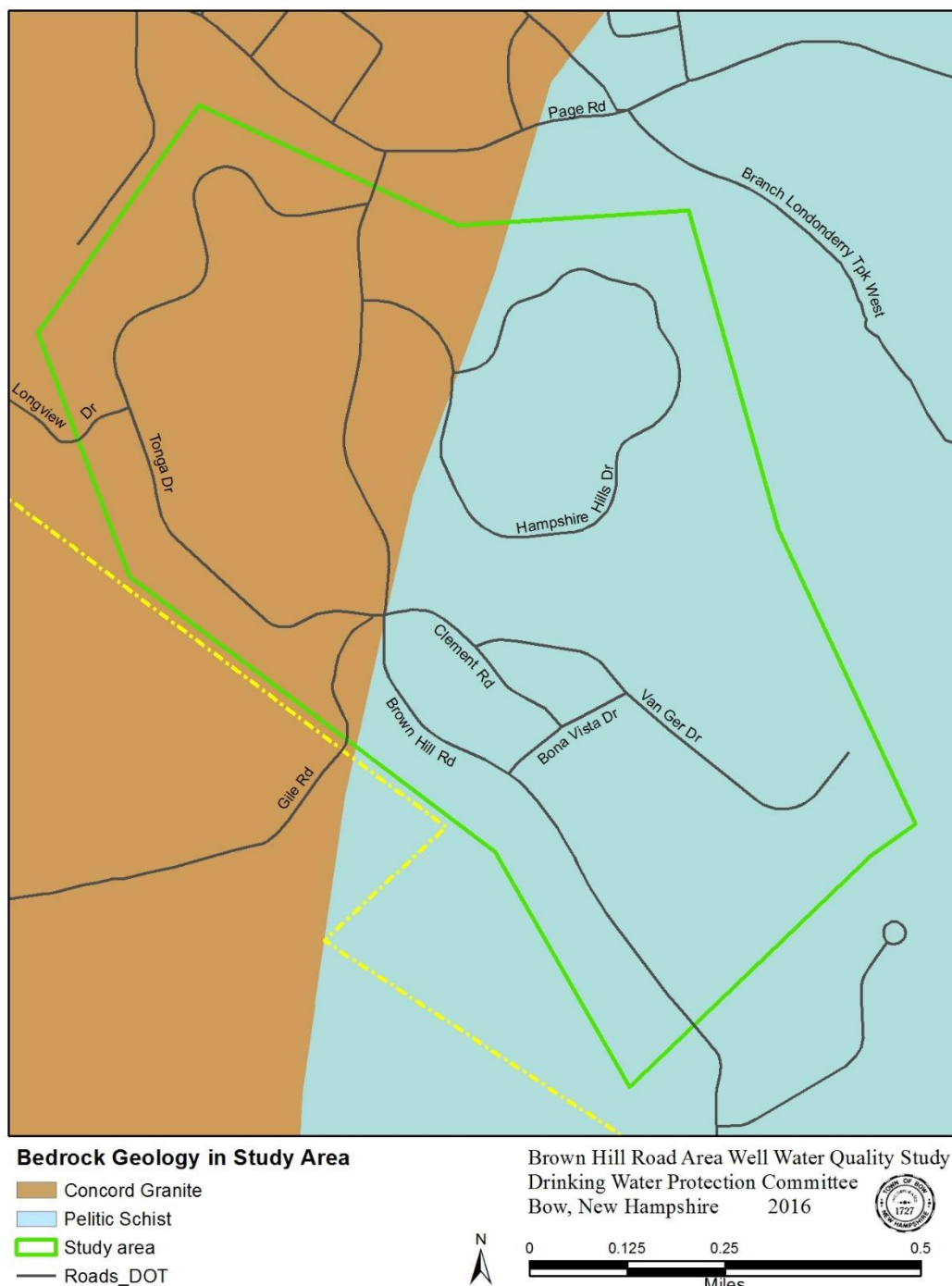




Figure 3-6 – Correlation of Chloride and Specific Conductance

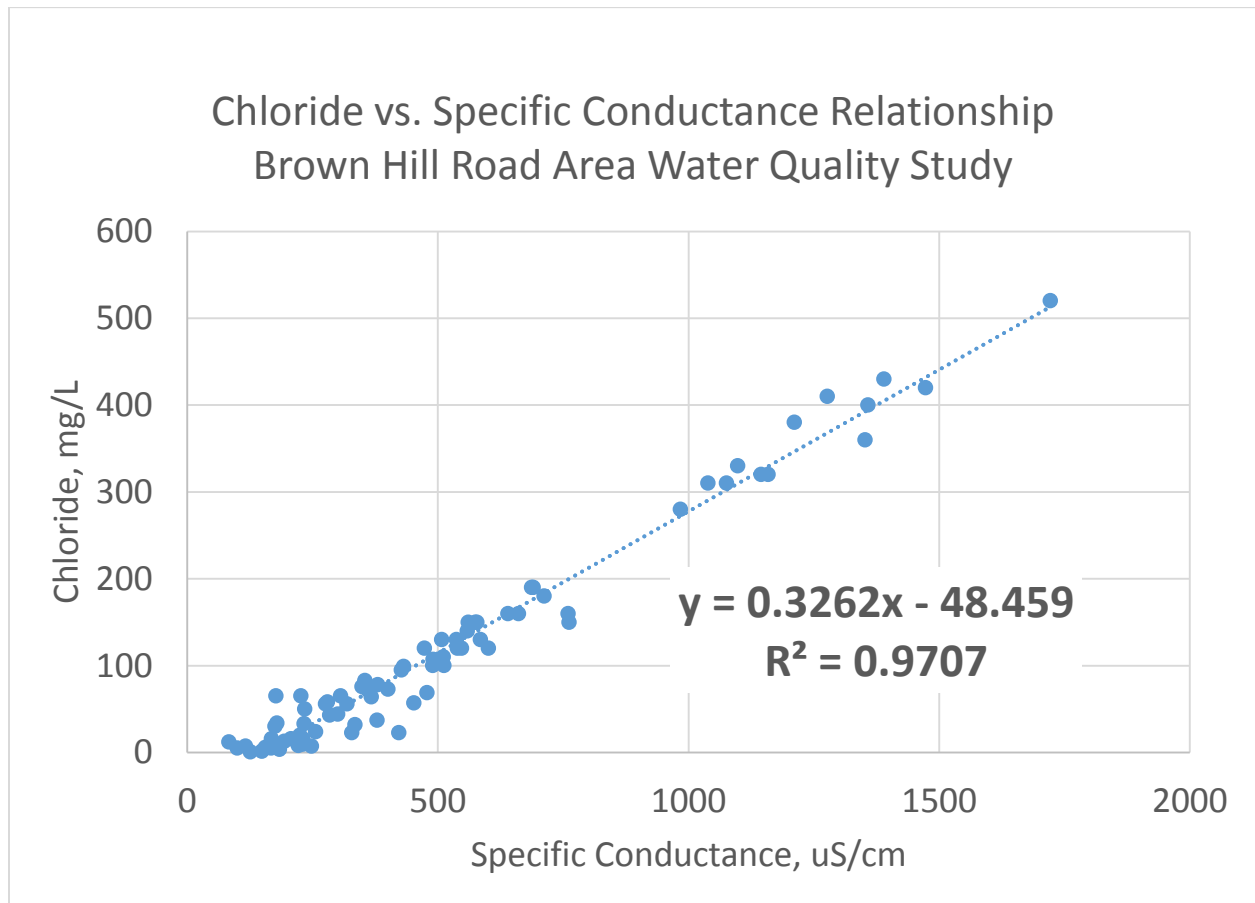


Figure 3-7 – Drainage Ditches Brown Hill Rd and Bona Vista Dr

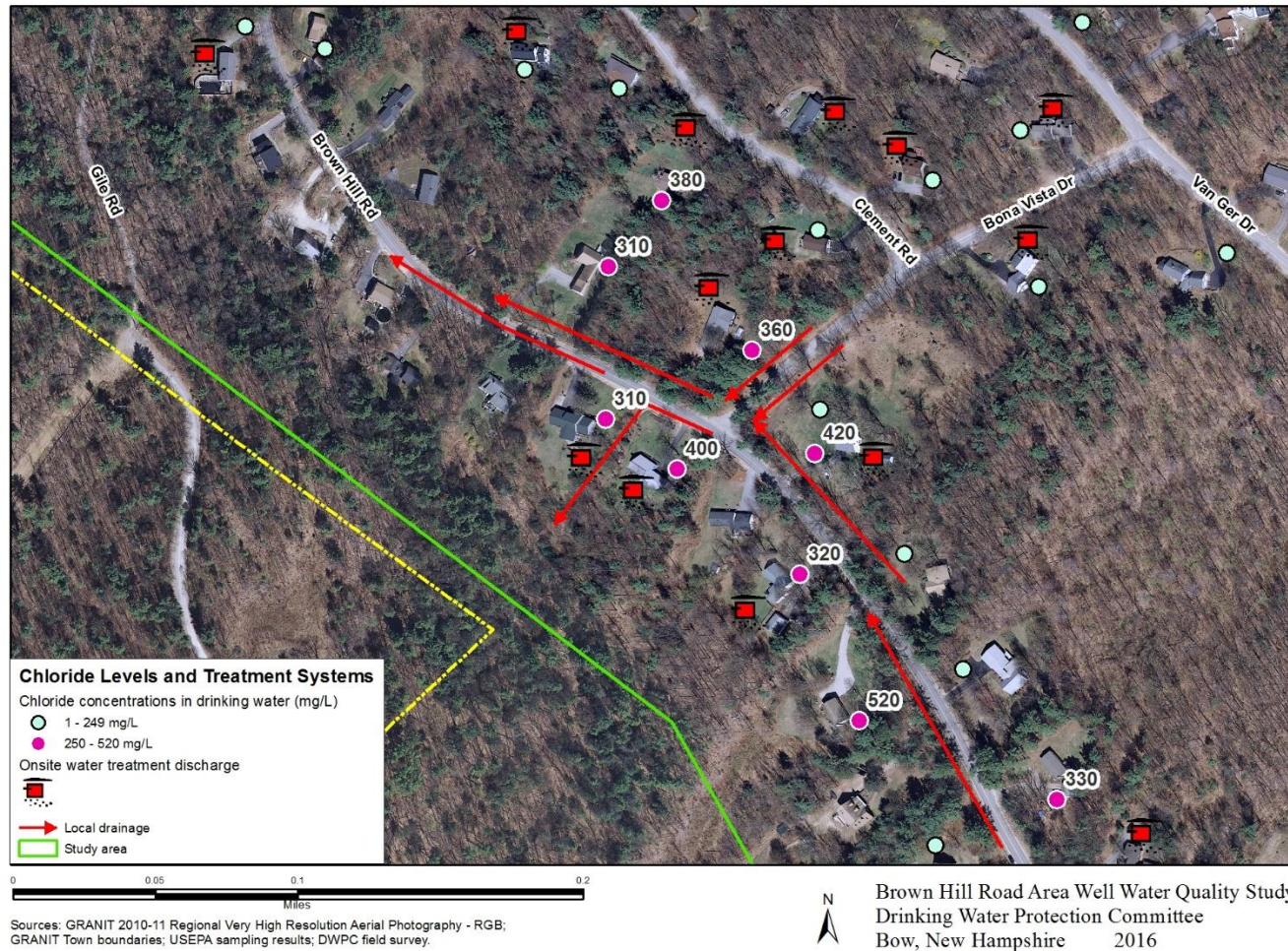
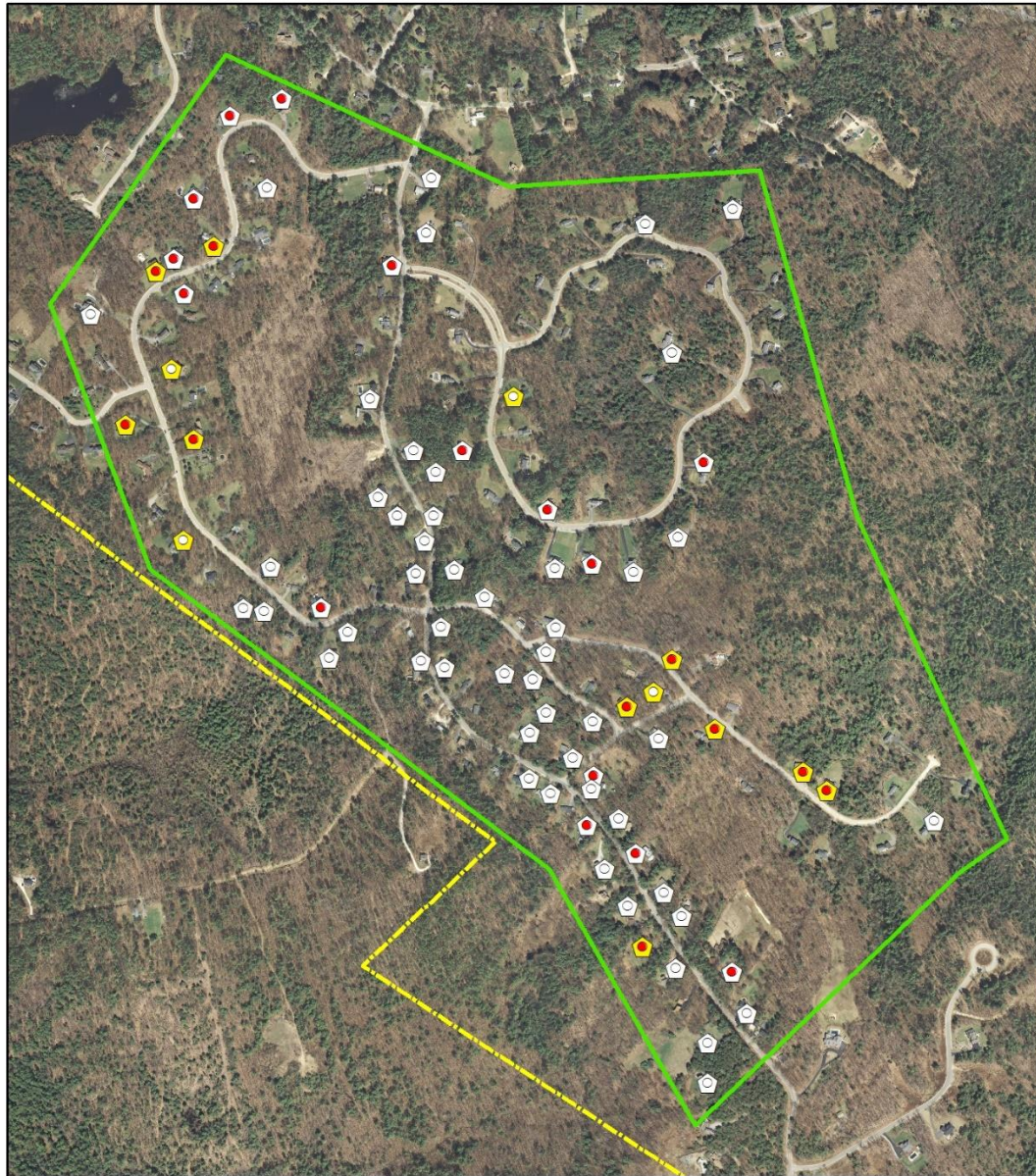




Figure 3-8 - Arsenic and Uranium Levels in Wells Sampled



**Arsenic and Uranium Levels in Wells Sampled**

**Arsenic**

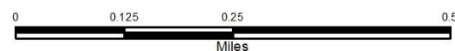
- 0 - 10 ppb
- >10 - 140 ppb (above health standard)

**Uranium**

- 0 - 30 ppb
- >30 - 260 ppb (above health standard)

Study area

Brown Hill Road Area Well Water Quality Study  
Drinking Water Protection Committee  
Bow, New Hampshire 2016



Sources: GRANIT 2010-11 Regional Very High Resolution Aerial Photography - RGB;  
GRANIT Town boundaries; USEPA sampling results.